

## Dietary composition and yeast/microalgae combination supplementation modulate the microbial ecosystem in the caecum, colon and faeces of horses

Pauline Grimm<sup>1,2\*</sup>, Sylvie Combes<sup>3</sup>, Géraldine Pascal<sup>3</sup>, Laurent Cauquil<sup>3</sup> and Véronique Julliand<sup>2</sup>

<sup>1</sup> Lab To Field, 26 Bd Docteur Petitjean, F-21079 Dijon, France

<sup>2</sup> Univ. Bourgogne Franche-Comté, AgroSup Dijon, PAM UMR A 02.102, F-21000 Dijon, France

<sup>3</sup> GenPhySE, Université de Toulouse, INRA, INPT, ENVT, Castanet Tolosan, France

\* **Corresponding author:** Pauline Grimm, pauline.grimm@lab-to-field.com, +33380772661

### Short Title:

Horse microbiota and dietary yeast/microalgae

**Keywords:** Equine, microbiota, hindgut, faeces, diet, yeast, microalgae

### Abstract

Starchy diets can induce hindgut dysbiosis in equine. This study evaluated the impact of a yeast (*Saccharomyces cerevisiae*) and microalgae (*Aurantiochytrium limacinum*) supplementation on caecal, colonic and faecal microbial ecosystem and on blood inflammatory parameters of horses fed high-fibre or high-starch diets. Six fistulated geldings in a 2x2 Latin-square design were alternatively supplemented and received during each period 100% hay (4 weeks) followed by a 56/44 hay/barley diet (3 weeks). Caecal, colonic and faecal samples were collected 4h after the morning meal three times per diet, at 5-day intervals, to measure bacterial richness, diversity, and composition and microbial end-products. Blood was simultaneously collected for measuring inflammatory markers. The starchy diet clearly modified the microbial ecosystem in the three digestive segments, with an increase of the amyolytic function and a decrease of the fibrolytic one. However no effect of the diet was observed on the blood parameters. When horses were supplemented, no significant change was found in lipopolysaccharides, Prostaglandin-E2, Serum Amyloid A concentrations and complete blood count neither in cellulose-utilising, starch-utilising and lactate-utilising bacteria concentrations nor in the volatile fatty acids and lactate concentrations and pH. Under supplementation, relative abundance of Family XIII Clostridiales increased in caecum and faeces irrespective of diet, and relative abundance of Veillonellaceae was higher during hay/barley diet in colon and faeces. Most variations of faecal bacterial taxa under supplementation were not observed in the hindgut. However, all variations suggested that supplementation could increase the fibrolytic function whatever the diet, and limit dysbiosis when horses' diet changed from high-fibre to high-starch.

This peer-reviewed article has been accepted for publication but not yet copyedited or typeset, and so may be subject to change during the production process. The article is considered published and may be cited using its DOI

10.1017/S0007114519002824

The British Journal of Nutrition is published by Cambridge University Press on behalf of The Nutrition Society

## Introduction

The use of a horse as an athlete requires the provision of a high-energy ration to the individual. Commonly, this is achieved by complementing forages with concentrates rich in starch and non-fibre carbohydrates (NFC). However, horses have moderate capacity to digest starch in the small intestine due to low concentrations of pancreatic amylase <sup>(1)</sup>. In this respect, high amounts of starch in the ration is not entirely degraded in the pre-caecal gut and flows into the hindgut, constituted by the caecum and the colon, where it can trigger microbiota dysbiosis. Compared with high-fibre diets, high-starch diets lead indeed to an increase in starch-utilising microorganisms, at the expense of fibre-utilising microorganisms that are essential for degrading plant cell walls. This results in a shift in fermentation patterns with higher lactate and propionate concentrations leading to increasing acidity. This has recently been reviewed by Julliand and Grimm (2017) <sup>(2)</sup>. Moreover, an overload of starch was reported to induce histological damage of the hindgut epithelial mucosa of horses <sup>(3)</sup>. It was also shown to increase hindgut mucosa permeability both *in vitro* <sup>(4)</sup> and *in vivo* <sup>(5)</sup> in equine studies. It was hypothesized that the low pH and/or the lactate produced by starch fermentation could be responsible for epithelium disruption. In livestock, an increase in intestinal permeability can result in leakage of bacteria, or bacterial-products, such as lipopolysaccharides, through the intestinal epithelium to the bloodstream, with subsequent activation of an acute phase response <sup>(6; 7)</sup>.

Some nutritional solutions have been developed with the objective of supporting the equine hindgut microbiota during dietary challenges. A new product combining the yeast *Saccharomyces cerevisiae* strain CBS 493.94 and the microalgae *Aurantiochytrium limacinum* has been proposed. *S. cerevisiae* strain CBS 493.94 has long been used in equine nutrition for its beneficial effect on the hindgut microbial ecosystem in horses fed either high-fibre or high-starch diets. Globally, supplementation may have a positive effect on microbiota by enhancing its fibre-digesting capacity and by limiting dysbiosis with high-risk feeding practices, such as ingestion of large quantities of starch <sup>(8; 9; 10)</sup>. Conversely, the effect of *A. Limacinum* on the hindgut microbial ecosystem in horses had yet to be studied. Initial investigations in ruminants suggested that, thanks to its high content in omega-3 fatty acids (mainly in docosahexaenoic acid (DHA)), it could modify ruminal microbiota composition and activity <sup>(11; 12)</sup>. However, it is not known whether those modifications are beneficial for the animal. Omega-3 fatty acids have also been reported to have immunomodulatory and anti-inflammatory effect in various mammals <sup>(13)</sup>. Therefore, supplementing *A. limacinum* in horses fed high-starch diets could modulate

the hindgut microbiota structure and activity and help limit inflammation where integrity of the intestinal mucosa is compromised leading to LPS translocation.

In equine studies, *in vivo* evaluation of nutritional solution effects on the hindgut microbiota was performed either by studying directly caecum or colon content using fistulated horses<sup>(8; 9; 14; 15)</sup>, or, more frequently, using faeces, which is non-invasive and less labour-intensive<sup>(16; 17; 18; 19; 20; 21; 22)</sup>. However, to our knowledge, no study has ever verified that changes observed in the faeces under supplementation were consistent with those in the hindgut microbial ecosystem. In horses, the caecum and the right ventral colon (first part of the large colon) are anatomically far from the rectal ampulla, being separated by the left ventral colon, the left dorsal colon and the right dorsal colon plus the small colon. The retention of the digesta in the whole hindgut is longer than some 20 hours<sup>(23)</sup>. Along the different compartments, there is an active absorption (SCFAs, amino-acids, water) and an evolution of the bacterial structure<sup>(24)</sup>. It is thus assumed that the response to a supplementation could be different between the proximal hindgut and the faeces.

The present study aimed to assess the impact of supplementing the combination of *S. cerevisiae* and *A. limacinum* on both the caecal, colonic and faecal microbial ecosystem as well as blood inflammatory markers of horses fed a high-fibre or a high-starch diet.

## Methods

All experimental procedures were evaluated and approved by the local ethical committee (Comité d’Ethique de l’Expérimentation Animale Grand Campus Dijon).

### *Animals and management*

Six adult crossbred geldings ( $495 \pm 18$  kg BW) fitted with cannulas in the caecum (5/6 horses) and the right ventral (RV) colon (6/6 horses) were individually housed in 14 m<sup>2</sup> free stalls bedded with wood shavings. Each day all horses had access to a dry paddock for 2h. They were exercised six times a week in an automatic walker for 1h per day at 4-6 km/h. They were up-to-date with their vaccinations against influenza and tetanus (Proteqflu, Merial SAS, Lyon, France) and were dewormed (Hippomectin, Audevard, Clichy, France).

### *Diets and supplementation*

Throughout the experimental trial, horses were fed successively two different iso-energetic diets providing 105% energy requirements of a horse in “very light exercise” according to French recommendations<sup>(25)</sup>. The first diet (H) was composed of 100% meadow hay (2.1% BW DM hay / day, Table 1). The second diet (B) contained 56% meadow hay and 44% rolled barley (1.4 % BW DM / day of which 0.8 % BW DM hay / day, Table 1). The hay/barley diet was formulated for providing starch at 0.20% BW in the morning meal which is the maximum recommendation of starch per meal<sup>(26)</sup>. It also provided 0.8% BW DM per day which is less than the minimal recommendation of 1% BW DM of hay<sup>(27)</sup>. Both diets were equally distributed across two meals offered at 8:00 and 16:30. The test supplement provided 100g of microalgae *A. limacinum* (All-G-Rich™, Alltech®, Dunboyne, Ireland) and 10g ( $1 \times 10^9$  CFU/g) of yeast *S. cerevisiae* (Yea-sacc™, Alltech®, Dunboyne, Ireland) daily. The microalgae powder was pelleted with molasses and anise infusion to improve its palatability. The supplementation was equally split across the two meals. Water and a block of mineralized salt containing sodium chloride (Na 39% / SOLSEL®; European Salt Company, Hannover, Germany) were offered free choice.

### ***Experimental design***

Horses were randomly assigned to two treatment groups over two experimental periods in a 2 × 2 Latin square design. Each experimental period was a total of eight weeks, separated by a wash-out period of seven weeks (Figure 1). Group 1 received the yeast/microalgae product in experimental period 1 (P1) only, while Group 2 received the product during experimental period 2 (P2). In each experimental period, both groups were fed the H diet over the first four weeks and then, over five days, gradually moved onto the B diet for the remainder of that experimental period. During the wash-out period, all horses received hay as the only feedstuff, without supplementation.

### ***Sample collection***

During each experimental period, caecal, colonic, faecal and blood samples were collected 4h after the morning meal on days 17, 22 and 27 during the H diet (H.17, H.22 and H.27), and days 10, 15 and 20 during the B diet (B.10, B.15 and B.20) (Figure 1).

The caecum and colon contents were obtained by gravity via the cannulas. Fresh faeces were collected by rectal grab. An aliquot of unfiltered content was sampled in a container filled to capacity (to avoid the presence of oxygen) for microbiological analyses performed immediately after the sample collection. Another aliquot of the unfiltered contents was sampled for molecular biology analysis (1

mL, storage at  $-80^{\circ}\text{C}$  until analysis). The remaining part of the contents was filtered (100  $\mu\text{m}$  filter) and 1 mL was immediately stored at  $-20^{\circ}\text{C}$  until analysis after addition of a preservative (0.1 mL of a solution of 5%  $\text{H}_3\text{PO}_4$  + 1%  $\text{HgCl}_2$ ) for further VFAs analysis. Another filtered 1 mL was immediately stored at  $-20^{\circ}\text{C}$  until analysis for further lactate analysis.

Blood samples were taken from the jugular vein into 4 mL vacutainer tubes (Venosafe, Terumo, Guyancourt, France) containing either K3-EDTA as anticoagulant (for lipopolysaccharides (LPS), Prostaglandin-E2 (PGE2) and complete blood count analyses) or not (for Serum Amyloid A (SAA) analysis). Tubes for complete blood count analysis were directly sent to an external laboratory, and all other tubes were centrifuged (10 min at 1000 g). Plasma or serum was removed and frozen at  $-20^{\circ}\text{C}$  (for LPS and PGE2 analysis) or directly assayed (for SAA analysis).

Analyses were carried out according to sampling day (Figure 1).

### ***Functional bacterial groups enumeration***

Total anaerobic bacteria and cellulose-utilising, starch-utilising and lactate-utilising bacteria were assayed using conventional anaerobic culture techniques. The content of caecum, colon and faeces (1g) were serially diluted to decimal in a mineral solution <sup>(28)</sup> and then inoculated in roll tubes on specific media under continuous flow of  $\text{CO}_2$  <sup>(29)</sup>.

Concentrations of total anaerobic bacteria (dilutions representing  $10^{-5}$ ,  $10^{-6}$ , or  $10^{-7}$  mL of intestinal contents) were determined on a non-selective modified complete agar medium <sup>(30; 31)</sup> after 48 h of incubation at  $38^{\circ}\text{C}$ . Concentrations of lactate-utilising bacteria (dilutions representing  $10^{-3}$ ,  $10^{-4}$ , or  $10^{-5}$  mL of intestinal contents) were determined on a selective medium <sup>(32)</sup> after 48h of incubation at  $38^{\circ}\text{C}$ . Concentrations of starch-utilising bacteria (dilutions representing  $10^{-4}$ ,  $10^{-5}$  and  $10^{-6}$ , mL of intestinal contents) were determined on a modified selective medium containing 1% (w/v) soluble starch as the main energy source <sup>(33)</sup>, after 72 h of incubation at  $38^{\circ}\text{C}$ . Most probable number <sup>(34)</sup> of cellulose-utilising bacteria (dilutions representing  $10^{-5}$ ,  $10^{-6}$ , and  $10^{-7}$  mL of intestinal contents) were determined using a modified broth medium <sup>(31; 35; 36)</sup>, after 15 d of incubation at  $38^{\circ}\text{C}$ .

### ***Bacterial 16S rDNA extraction, sequencing and bioinformatical analysis***

Total DNA was extracted from 0.25g caecal, RV colonic or faecal content as described by Yu and Morrison <sup>(37)</sup>. The quantity of obtained DNA was assessed on a spectrophotometer (Eppendorf, Hamburg, Germany) and its purity was evaluated by calculating A260/280 ratios to verify contamination by proteins (ratio values between 1.6 and 2 were acceptable for nucleic acid extractions

from digestive samples). DNA samples were then frozen at  $-80^{\circ}\text{C}$ . The V3-V4 hypervariable region (459 bp in *E. Coli*) of the bacterial 16S ribosomal RNA gene (16S rRNA, 1542 bp in *E. coli*) was amplified by PCR using the forward and reverse primers F343 (CTTTCCTACACGACGCTCTTCCGATCTACGGRAGGCAGCAG)<sup>(38)</sup> and R784 (GGAGTTCAGACGTGTGCTCTTCCGATCTTACCAGGGTATCTAATCCT)<sup>(39)</sup>. The PCR mix was constituted of 10 ng of DNA, 5  $\mu\text{L}$  of buffer (MP Biomedicals, Illkirch-Graffenstaden, France), 1  $\mu\text{L}$  of dNTP mix, 0.5  $\mu\text{L}$  of Taq polymerase (5 U/ $\mu\text{L}$  MTP™ Taq DNA Polymerase, Sigma, Saint-Louis, Missouri, USA), 1.25  $\mu\text{L}$  (20  $\mu\text{M}$ ) of forward and reverse primer and was completed to 50  $\mu\text{L}$  with sterile water. The conditions of PCR were: one cycle at  $94^{\circ}\text{C}$  during 1 min, followed by 30 x ( $94^{\circ}\text{C}$  during 1 min,  $65^{\circ}\text{C}$  during 1 min and  $72^{\circ}\text{C}$  during 1 min). The amplification was followed by a melting program ( $72^{\circ}\text{C}$  during 10 min). To verify the correct amplification of the V3-V4 region, the DNA samples were electrophoresed on a 2% agarose gel. The PCR products (4  $\mu\text{L}$ ) were applied per well and electrophoresed for 75 min at  $45^{\circ}\text{C}$  using a fixed voltage of 70 V on a Mupid One system. After purification with magnetic beads amplicons were submitted to a second PCR aiming at ligate Illumina adapters and an index allowing the identification of the sample. The PCR mix was the same than for the first PCR with a forward primer (AATGATACGGCGACCACCGAGATCTACACTCTTTCCCTACACGAC) and a reverse primer (CAAGCAGAAGACGGCATAACGAGAT-Index-GTGACTGGAGTTCAGACGTGT). The conditions of PCR were similar to the previous ones except 12 cycles of elongation were performed. PCR products were again purified using magnetic beads. The resulting PCR products were sequenced using an Illumina MiSeq run of 250 base paired-ends according to the manufacturer instructions (Illumina Inc., San Diego, CA). The quality of the run was checked using control libraries generated from the PhiX virus (Illumina PhiX control; Illumina Inc., San Diego, CA).

Bioinformatic analyses were performed using the FROGS pipeline (Find Rapidly OTU with Galaxy Solution), which associates several tools to work on the file of sequences and obtain both the abundance table of operational taxonomic units (OTUs) and their taxonomic affiliation<sup>(40)</sup>. OTUs which are not present in at least 2 samples, or whose abundance was less than  $5 \times 10^{-5}$ , were removed. Remaining OTUs were then aligned to the silva123 16S data base<sup>(41)</sup> using BLAST and were affiliated to the highest taxonomic rank possible. The abundance table and the associated multi-hit list were created. Richness (Number of species) and diversity (Shannon and Inverse Simpson) indexes were calculated from the abundance table.



### ***Biochemical analyses***

The pH of the caecum, colon and faeces was measured directly after the samples collection on filtered contents using the HI 1053 electrode (Hanna instrument, Lingolsheim, France) connected to an electronic pH-meter (CyberScan pH 510, Eutech Instrument, Strasbourg, France). Volatile fatty acids (VFAs) (Acetate (C2), Propionate (C3), Butyrate (C4), Valerate (C5)) concentrations were assayed by a gas-liquid chromatography (Clarus 500, PerkinElmer, Courtaboeuf, France)<sup>(42)</sup>. Each VFA was also expressed as a percentage of the total VFAs concentration and the ratio [(C2+C4)/C3] was calculated according to Sauvant et al. (1994)<sup>(43)</sup>. D-lactate and L-lactate concentrations were measured spectrophotometrically at 340 nm (MRX revelation, Dynatech Laboratories, Guyancourt, France) in microplate using an enzymatic colorimetric method (Megazyme, D-/L-Lactic Acid (D-/L-Lactate) (Rapid) Assay Kit, Megazyme International Ireland Ltd., Wicklow, Ireland) as published in Grimm et al. (2017)<sup>(44)</sup>.

### ***Blood analyses***

Blood LPS concentration was determined by direct quantitation of 3-hydroxymyristic acid (3HM) using high-performance liquid chromatography coupled with tandem mass spectrometry (HPLC-MS/MS, Agilent QQQ 6460 device) as presented by Pais de Barros et al. (2015)<sup>(45)</sup>. Plasma Prostaglandin E2 concentration was evaluated using an immunoassay kit (DetectX Prostaglandin E2, Arbor Assays, Ann Arbor, MI, USA), following the regular format protocol. Serum amyloid A concentrations were assayed in an extern laboratory (LABEO Frank DUN-COMBE, Caen, France) using an ELISA Phase kit from Eurobio. Complete blood counts were performed in an extern laboratory (LABEO Frank DUNCOMBE, Caen, France) using a haematology system (ADVIA 120, Siemens). The blood cell count included count of erythrocytes (red blood cells) and leucocytes (white blood cells) with their distribution into neutrophils, basophils, eosinophils, monocytes, small and large lymphocytes. The haemoglobin concentration and haematocrit percentage were also measured, as well as blood platelets.

### ***Statistical analyses***

As horses fitted with cannulas both in caecum and right ventral colon represent a scarce resource due to ethical concerns, six animals were recruited in this study. A Latin square design was chosen so that each animal acted as its own control, thus reducing the individual variability and allowing to reach a significance level of 0.05 with a power of 80% for the variables tested.

Richness and diversity indexes, as well as normalized taxa (phylum, class, family and genus level) were statistically analysed by the MIXED procedure of SAS (version 9.3, SAS Institute Inc., Cary, NC) for each digestive compartment separately, testing the period (P1 and P2), the diet (H and B), the supplementation (supplemented or not) and their interactions. The model included horse and horse x period in the random statement. For all other data, the model was similar, but tested the sampling days instead of the diet, and included the sampling day as repeated measures with horse x period as subject. In case of a significant sampling day effect, orthogonal contrast was performed to compare the two diets (H vs B). For both models, least-square means were calculated for all variables using Tukey multiple comparison procedure. The significance threshold was set at  $P < 0.05$ , and trends were considered at  $P < 0.1$ . Principal coordinates analysis (PCoA) based on Bray–Curtis distance of the 1931 OTUs was performed using the Vegan package in R.

## Results

Two horses were removed before the end of the trial due to health troubles. The first horse developed colic during P1 the day after the B.10 samples collection and was thus immediately removed. It was included in P2. The second horse developed a disease unrelated to digestion and had to be euthanized after the first collection (H.17) in P2.

### *Sequencing metrics*

The initial 2 059 711 sequences of the 16S rDNA V3–V4 regions obtained from the 62 caecal, colonic and faecal samples were reduced to 1 032 444 after quality filtering during bioinformatics processes, with a mean of  $16\,652 \pm 4377$  sequences per sample. These sequences were clustered into 1 931 OTUs (1622 in the caecal samples, 1856 in the colonic samples and 1793 in the faecal samples), that grouped into 11 phyla, 25 classes, 38 orders, 71 families and 189 genera. The captured diversity was large, as the coverage estimates were comprised between 98.0 and 99.7 % in the 62 samples (caecum:  $99.16 \pm 0.07$ ; RV colon:  $99.16 \pm 0.06$ ; faeces:  $98.91 \pm 0.06$ ).

Out of the 1931 OTUs, 1697 were considered as unknown species (87.9 %) and 186 were multi-affiliated (9.6 %). 43 OTUs in the caecum (2.5 % of the total abundance), 46 in the colon (2.8 % of the total abundance) and 37 in the faeces (1.1 % of the total abundance) were identified at species level.



Firmicutes and Bacteroidetes were identified as the two major bacterial phyla in the caecum (40.1 % and 48.1 % respectively), colon (57.3 % and 30.2 % respectively) and faeces (51.6 % and 34.2 %, respectively) (Online supplementary Figure S1)

### ***Richness and diversity indexes***

In all compartments, no significant interaction period x diet x supplementation was observed on the different richness and diversity indexes. In the caecum, the species number (P=0.039), the Shannon (P=0.009) and the Inverse Simpson (P=0.0002) indexes were significantly lower during the B diet than during the H diet, irrespective of the supplementation (Table 2). In the colon, the Inverse Simpson index (P=0.006) was significantly lower and the Shannon index tended to be significantly lower (P=0.099) during the B diet compared to the H diet. In the faeces, the species number (P=0.026) and the Shannon index (P=0.020) displayed significant interaction between the diet and the supplementation, with their values decreasing only in non-supplemented horses fed the B diet. The faecal Inverse Simpson index significantly increased with the yeast/microalgae supplementation irrespective of the diet (P=0.043).

### ***Bacterial taxa***

In the caecum, colon and faeces, significant effect of the diet was observed at all levels of bacterial taxonomy on a large number of taxa (Online supplementary Table S2). Using PcoA, caecal, colonic and faecal samples formed clear distinct groups according to the diet (H or B) fed (Figure 2).

In the caecum (Table 3), a significant diet x supplementation interaction was found on the relative abundance of genus *Ruminiclostridium* (P=0.033), that decreased when the diet changed from H to B diet only in non-supplemented horses. Significant effects of the yeast/microalgae supplementation were observed on the relative abundance of Clostridiales family XIII (P=0.025), and on the relative abundance of the genus *Pseudobutyrvibrio* (P=0.033), which significantly increased in supplemented horses, irrespective of the diet.

In the colon (Table 3), when horses changed from H to B diet, a decrease of family Bacteroidales S24-7 (P=0.047) and genus group *Lachnospiraceae NC2004* (P=0.005) relative abundances was observed in non-supplemented horses only. The Veillonellaceae relative abundance increased significantly in horses fed the B diet compared to H diet, with a larger increase in horses receiving the supplementation (P=0.037).

In the faeces (Table 3), the relative abundances of faecal Bacteroidales BS11 gut ( $P=0.034$ ) and *Alloprevotella* ( $P=0.004$ ) were significantly higher in supplemented horses fed the B diet. When horses changed from H to B diet, the decrease of Prevotellaceae ( $P=0.004$ ) and *Prevotellaceae UCG001* ( $P=0.001$ ) relative abundances was observed in non-supplemented horses only. During the H diet, the relative abundance of *Eubacterium ruminantium* group increased with supplementation ( $P=0.036$ ). During the B diet, the Ruminococcaceae relative abundance was higher in supplemented horses ( $P=0.029$ ). Significant effects of the yeast/microalgae supplementation were observed at family level on the relative abundances of Clostridiales vadin BB60 ( $P=0.010$ ), family XIII of Clostridiales ( $P=0.037$ ), Alcaligenaceae ( $P=0.018$ ), and Desulfovibrionaceae ( $P=0.049$ ), and at genus level on the relative abundances of *Anaerovorax* ( $P=0.049$ ), *Candidatus Soleaferrea* ( $P=0.031$ ), *Coprococcus* ( $P=0.035$ ), *Desulfovibrio* ( $P=0.049$ ), *Lachnospiraceae UCG002* ( $P=0.011$ ), *Ruminococcaceae UCG002* ( $P=0.008$ ) and *Sutterella* ( $P=0.018$ ). All these bacterial taxa relative abundances were higher when horses received the yeast/microalgae supplementation, irrespective of diet.

### ***Bacterial functional groups***

Except for the cellulose-utilising bacterial concentration in the caecum ( $P=0.037$ ), no significant interaction period x diet x supplementation was observed on the functional bacterial concentration. No significant interaction supplementation x sampling day was found on the bacterial groups (Table 4). No significant effect of the supplementation was observed. A significant effect of the sampling day associated with a significant diet effect was seen on the caecal lactate-utilisers ( $P=0.007$ ), and on all the RV colonic and faecal bacterial groups ( $P\leq 0.008$ ). The total anaerobes, starch-utilisers, lactate-utilisers increased and the cellulose-utilisers decreased when the diet changed from H to B.

### ***Biochemical parameters***

No significant period x sampling day x supplementation interaction, supplementation x sampling day interaction, and supplementation effect was observed on biochemical parameters, irrespective of sample type. A significant effect of sampling day was found on several parameters, as well as a significant effect of the diet: the change of diet from H to B diet caused a decline in total VFAs ( $P=0.028$ ) and acetate ( $P=0.002$ ) concentration and an increase in propionate ( $P=0.007$ ) concentration in the caecum. In the RV colon, there was an increase in valerate concentration ( $P=0.0005$ ) and, in the faeces, an increase in all VFAs concentration (Table 5). The VFAs ratio significantly decreased in the

caecum ( $P < 0.0001$ ) and RV colon ( $P = 0.017$ ), but not in the faeces. No significant dietary variations were observed on lactate concentrations.

No significant interaction supplementation x sampling day and supplementation effect was observed on VFAs proportions. A significant effect of day of sampling concomitant with a significant effect of diet was observed on acetate and propionate proportions both in the caecum ( $P < 0.0001$ ) and the RV colon ( $P = 0.011$  and  $P = 0.023$  for acetate and propionate proportions, respectively), but not in faeces (Figure 3). In the hindgut compartments, the proportions of acetate were significantly lower and the proportions of propionate significantly higher when horses were fed the B diet compared with the H diet.

### ***Blood parameters***

No significant interaction period x diet x supplementation was observed on the blood parameters except on the SAA concentration ( $P = 0.028$ ). No significant interaction between the diet and the supplementation nor simple significant effects of the diet or supplementation were observed on the different blood parameters (Online supplementary Table S3).

### **Discussion**

The present study provides a better insight into the phenomenon of dysbiosis in the equine hindgut thanks to the holistic approach combining the use of culture and molecular techniques simultaneously with microbial activity measurements. Furthermore, this study investigated for the first time a possible way for alleviating digestive dysbiosis using a combination of yeast and microalgae supplementation both in the hindgut and the faeces of horses.

When horses changed from a 100% hay diet to a 56/44 hay/barley diet, their hindgut microbial ecosystems were clearly challenged in terms of diversity and function. The hay/barley diet was associated with a lower bacterial diversity both in the caecum and RV colon in agreement with a previous study<sup>(46)</sup> and with a lower richness in the caecum only. A lack of sufficient diversity in the bacterial community has been reported to diminish its stability and ability to withstand perturbation<sup>(47)</sup>. This would imply that the microbial ecosystem of the horse hindgut under the hay/barley diet would be less resistant to stress than under the hay diet, thus leading potentially to a dysbiosis responsible for colic. Interestingly, the individual that developed colic on the eleventh day of the high-starch diet (non-supplemented) showed the lowest diversity in the caecum (Shannon index: 4.12) and the faeces (Shannon index: 2.41) compared with other horses.

Similarly to previous data <sup>(9; 48)</sup>, the fibrolytic function was disturbed under the hay/barley diet compared with hay, as demonstrated by the lower cellulose-utilising bacteria and [(C2+C4)/C3] ratio. This was in accordance with the decrease of the relative abundance of several bacterial taxa, such as Fibrobacteres, Prevotellaceae, Rikenellaceae, Bacteroidales S24-7 and several genera of Lachnospiraceae and Ruminococcaceae that could be implicated in plant cell wall degradation <sup>(49; 50; 51)</sup>. Concomitantly, the amylolytic function was higher with the hay/barley diet compared to hay diet, as shown by the increase of the starch-utilising bacteria and propionate and valerate concentrations. , *Lactobacilli* and *Streptococci* have been the most studied starch-utilising bacteria using culture technics <sup>(24)</sup>. Our sequencing data confirmed that in the proximal hindgut, the Streptococcaceae family relative abundances were higher with the hay/barley diet (from 0.06 % to 0.13 % in the caecum, and from 0.02 % to 0.59 % in the RV colon in non-supplemented horses). This increase even if it remained limited, was in accordance with previous studies using sequencing technics <sup>(46)</sup> or classical culture technics <sup>(9; 48)</sup>. On the contrary, we did not observe changes in *Lactobacilli* by sequencing 16S bacterial rDNA whereas a large increase was reported in studies using classical culture technics. In agreement with previous data <sup>(46)</sup>, the relative abundance of Succinivibrionaceae family (member of Proteobacteria phylum) that possesses several species able to degrade starch <sup>(52)</sup> largely increased in both equine caecum and RV colon when high-starch diet was fed,. We demonstrated that the lactate-utilising function was higher with the hay/barley diet than with the hay diet: the number of lactate-utilising bacteria increased in the caecum and RV colon using culture technics but also using sequencing technics, as we observed an increase of Veillonellaceae family, confirming previous findings <sup>(46; 53)</sup>. Despite the fact that it induced disturbances in hindgut microbial ecosystem, the high-starch diet did not lead to alteration of plasma LPS concentration as expected, nor alteration of other measured inflammatory markers. It may be assumed that the hay/barley diet used in this study was not sufficiently disturbing to induce an inflammatory reaction, precluding demonstration of any anti-inflammatory potential of the supplementation. Indeed, we did not record a decrease of pH with the hay/barley diet, thus preventing from a high acidity in the hindgut and subsequent mucosa disruption, LPS translocation into the plasma and later development of an acute phase response <sup>(4; 5)</sup>.

Regarding supplementation we expected to observe the combined effects of yeast (fibrolytic function improvement and dysbiosis limitation as reported in horses) and microalgae (microbial ecosystem alteration in ruminants and inflammatory modulation in mammals) when the product was supplemented. Factually we found an increase of the relative abundance of *Pseudobutyrvibrio* in the

caecum that could be due to the microalgae supplementation rich in long-chain unsaturated fatty acids, mostly DHA. Indeed, it has been reported that this genus has a role in lipid biohydrogenation in the rumen<sup>(54; 55)</sup>. Besides in the rumen, bacteria belonging to *Pseudobutyrvibrio* produce multiple xylanases responsible for high xylanolytic activity and are mainly butyrate producers<sup>(56; 57)</sup>. Yeast/microalgae supplementation could thus contribute to increase the fibrolytic function in the caecum.

Another significant impact of yeast/microalgae supplementation was the reduction of the variations in the bacterial taxa relative abundance due to the high-starch diet. Firstly, the supplementation avoided the decrease in relative abundance of some potential fibre-utilising bacteria in the caecum (*Ruminiclostridium*) and in the RV colon (*Bacteroidales* S24-7, *Prevotella* and *Lachnospiraceae* NC2004) that was observed in non-supplemented horses when the hay/barley diet was fed. In addition, the increase in relative abundance of the lactate-utiliser Veillonellaceae reported during the hay/barley diet was amplified in the RV colon of supplemented horses. This suggested a higher capacity to lower the lactate-concentration, thus limiting acidity and associated issues. The increase in lactate-utilising bacteria with the high-starch diet was in accordance with previous equine<sup>(8; 10)</sup> and ruminant studies<sup>(58)</sup> that investigated *S. cerevisiae* supplementation effects. However, this increase did not modify the lactate-utilising function (culture technics) or lactate concentration.

The changes in bacterial taxonomy with the yeast/microalgae supplementation, either in the sense of the increase of fibre-utilising representatives or in the sense of dysbiosis limitation, had limited consequences on the cultivable cellulose-utilising bacteria and VFAs production from the microbial ecosystem. It is possible that some other bacterial functions not investigated in this study, such as the hemicellulose-utilising or pectin-utilising, were altered with supplementation. Assessing different enzymes would allow better characterisation of the impact of supplementation.

The absence of a yeast supplementation effect on the cellulolytic function could be explained by the difference in terms of quantity of *S. cerevisiae* strain CBS.493.94 used between studies mentioned in the literature and ours<sup>(8; 9; 10)</sup>. We fed our horses top dressed 10g/day Yea-Sacc, which represented  $1 \times 10^{10}$  CFU/day per horse as recommended. This was slightly lower than the dose of  $4.5 \times 10^{10}$  CFU/day distributed in two earlier studies<sup>(8; 9)</sup>. Another study did not specify the dose of Yea-Sacc that was used<sup>(10)</sup>.

In ruminants, many studies highlighted a diminution of the total VFAs concentration in the rumen, accompanied by a higher pH when a DHA-rich product (microalgae *A. limacinum* or fish oil) was supplemented. They also reported a lower molar proportion of acetate in parallel to a higher proportion of propionate in the rumen of supplemented ruminants<sup>(11; 59; 60)</sup>. Contrary to ruminants, the microalgae *A. limacinum* supplemented to horses passed firstly through the stomach and the small intestine before reaching the fermentative reservoir in the hindgut. The resistance of the microalgae to stomach acidity and pre-caecal digestion was unknown. Moreover, the quantity supplemented (100 g per day) was maybe not sufficient to have an effect on hindgut microbial functions.

In many mammals faeces are very often used to study the impact of a nutritional supplement on the digestive ecosystem. However as explained before, the response to a supplementation could be different between the proximal hindgut and the faeces of horses. In our study we thus compared changes observed in the faeces under yeast/microalgae supplementation with those measured in the proximal hindgut microbial ecosystem.

In a coherent way with what was observed in the caecum and RV colon, the bacterial functional groups and the biochemical parameters did not vary in the faeces of horses supplemented with *S. cerevisiae* and *A. limacinum*. Moreover, a very limited number of taxa varied in the same direction in the hindgut and faeces: the relative abundance of the Family XIII of Clostridiales increased both in the caecum and the faeces when horses were supplemented irrespective of diet, and the relative abundance of Veillonellaceae and the belonging genus *Anaerovibrio* were greater with supplementation in colon and faeces during hay/barley diet.

However, while we expected more noticeable effects of the yeast/microalgae in the hindgut than in the faeces, our results demonstrated greater changes in the faecal bacterial diversity and structure. Indeed, whereas the bacterial richness and diversity was unchanged in the hindgut with supplementation, the faecal diversity of supplemented horses increased whatever the diet (higher inverse of Simpson index). The loss of richness and diversity that occurred in the faeces during the high-starch diet was avoided with supplementation (higher number of species and Shannon index). Moreover, compared to the hindgut, the supplementation had a greater impact on bacterial structure in faeces, as more bacterial taxa had a modified relative abundance with supplementation. As in the hindgut, the variations in faeces suggested that supplementation could increase the fibrolytic function whatever the diet, and limit dysbiosis when horses' diet changed from high-fibre to high-starch.

## Conclusion

We highlighted that some parameters of the caecal and RV colonic microbial ecosystems were positively affected by the supplementation combining *S. cerevisiae* and *A. limacinum*. Nevertheless, more studies using microalgae alone might be beneficial, as well as studies combining microalgae and yeast, to characterize the effects of the algae more definitively in horse. It has recently been reported that microalgae could possess prebiotic properties<sup>(61)</sup> and this could be explored in horses.

In view of our data, the faecal microbial ecosystem appeared to be affected by the supplementation even more than the proximal hindgut microbial ecosystem. This suggests that faeces can be a good indicator for evaluating modifications in the hindgut microbial ecosystem, reflecting not only variations in the proximal but probably also those of the distal hindgut. More investigation into how representative faeces are of the hindgut environment is required to make accurate evaluation of nutritional products on intestinal function using faeces.

## Acknowledgments

We would like to thank Alltech for the financial support of this study, and for the revisions of this manuscript. This work was also supported by the Regional Council of Bourgogne – Franche Comté, the “Fonds Européen de Développement Régional (FEDER). We thank the entire technical staff who contributed actively to the care of horses, samplings and laboratory analyses at Agrosup Dijon. We are grateful to the genotoul bioinformatics platform Toulouse Midi-Pyrenees and Sigenae group for providing help and storage resources thanks to Galaxy instance <http://sigenae-workbench.toulouse.inra.fr>”

## Conflict of Interest

None

## Authorship

P.G. and V.J. conceived and oversaw the entire project. They elaborated and conducted the experimental study and managed the laboratory analysis of the samples, statistics, and interpretation of results. S.C., G.P. and L.C. supervised the sequencing, bioinformatical and biostatistical analyses. All authors participated in the article drafting or revising.



## List of figures

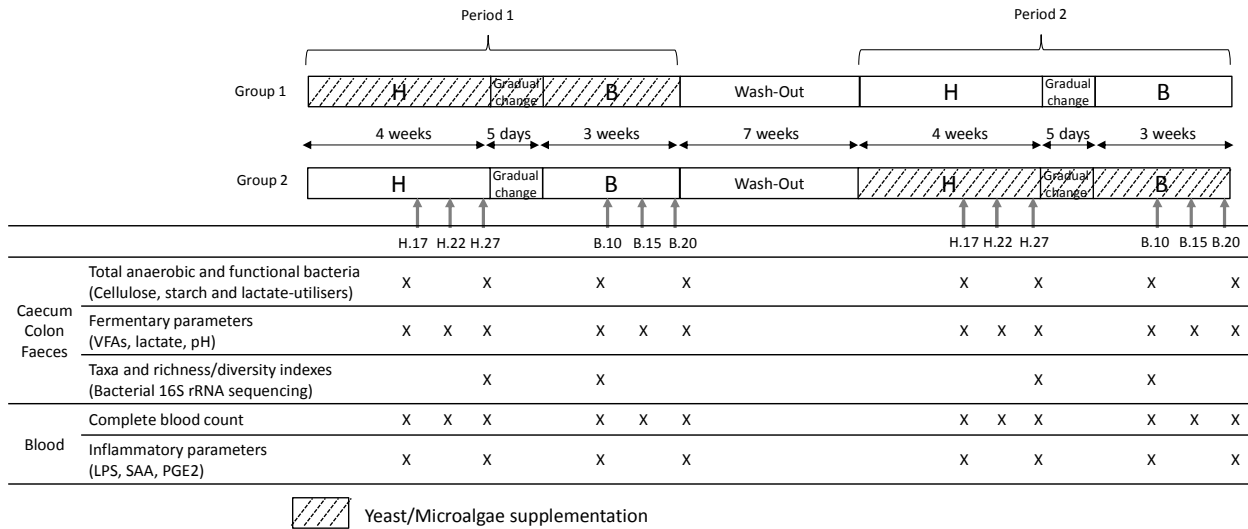


Figure 1: Experimental design of the study and analyses performed during the H diet (100 % hay) on the 17<sup>th</sup>, 22<sup>nd</sup> and 27<sup>th</sup> days (H.17, H.22 and H.27), and during the B diet (56 % hay + 44 % barley) on the 10<sup>th</sup>, 15<sup>th</sup> and 20<sup>th</sup> days (B.10, B.15 and B.20) in the caecum, right ventral colon, faeces and blood.

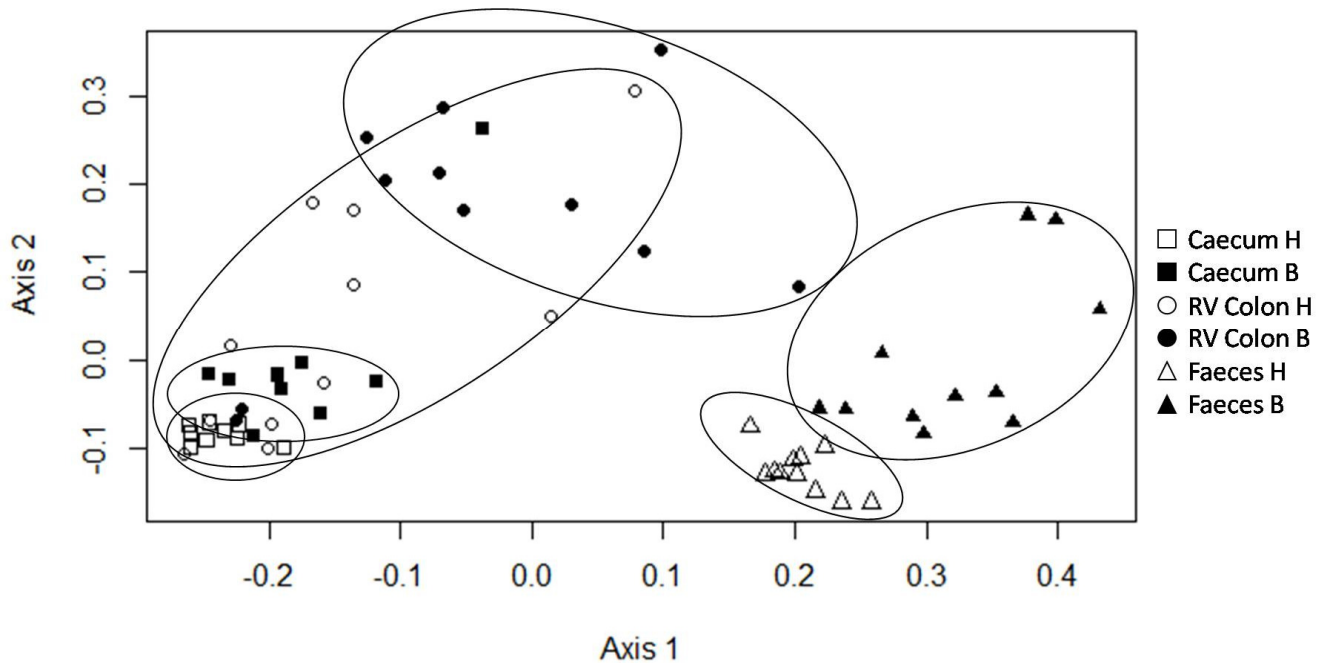


Figure 2: Principal Coordinate Analysis (PcoA) at the OTUs level showing the bacterial structure in the caecum, right ventral (RV) colon and faeces of horses fed either 100% DM hay (H) or 56% DM hay + 44% DM barley (B)

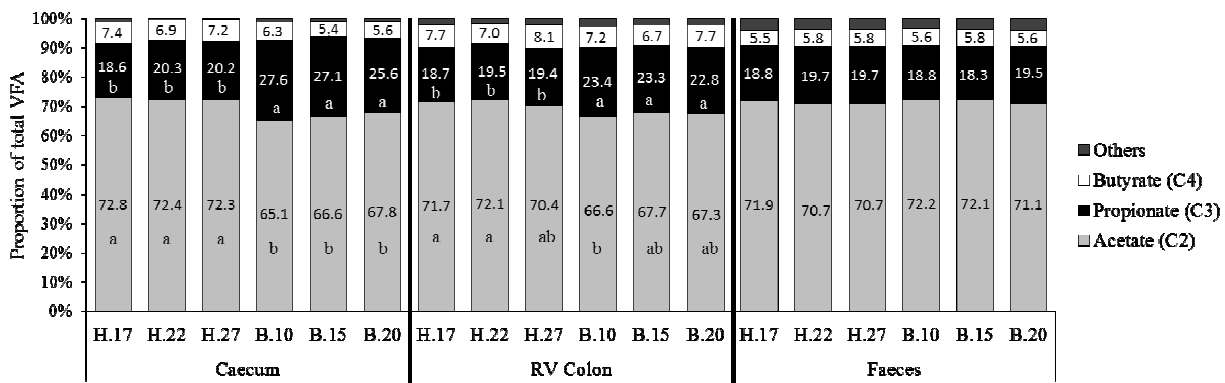


Figure 3: Proportions of VFAs in the caecum, RV colon and faeces of horses depending on the sampling day within diets H (100% hay) and B (56% hay + 44% barley) irrespective of supplementation

## References

1. Kienzle E, Radicke S, Landes D *et al.* (1994) Activity of amylase in the gastrointestinal tract of the horse. *J Anim Physiol Anim Nutr* **72**, 234-241.
2. Julliand V, Grimm P (2017) The impact of diet on the hindgut microbiome. *J Equine Vet Sci* **52**, 23-28.
3. Krueger A, Kinden D, Garner H *et al.* (1986) Ultrastructural study of the equine cecum during onset of laminitis. *Am J Vet Res* **47**, 1804-1812.
4. Weiss DJ, Evanson OA, Green BT *et al.* (2000) In vitro evaluation of intraluminal factors that may alter intestinal permeability in ponies with carbohydrate-induced laminitis. *Am J Vet Res* **61**, 858-861.
5. Weiss D, Evanson O, MacLeay J *et al.* (1998) Transient alteration in intestinal permeability to technetium Tc99m diethylenetriaminopentaacetate during the prodromal stages of alimentary laminitis in ponies. *Am J Vet Res* **59**, 1431-1434.
6. Gómez-Laguna J, Salguero FJ, Pallarés FJ *et al.* (2011) Acute phase proteins as biomarkers in animal health and welfare. *Acute phase proteins as early non-specific biomarkers of human and veterinary diseases*, 259-280.
7. Mani V, Weber TE, Baumgard LH *et al.* (2012) Growth and development symposium: endotoxin, inflammation, and intestinal function in livestock. *J Anim Sci* **90**, 1452-1465.
8. Jouany J-P, Medina B, Bertin G *et al.* (2009) Effect of live yeast culture supplementation on hindgut microbial communities and their polysaccharidase and glycoside hydrolase activities in horses fed a high-fiber or high-starch diet. *J Anim Sci* **87**, 2844-2852.
9. Medina M, Girard ID, Jacotot E *et al.* (2002) Effect of a preparation of *Saccharomyces cerevisiae* on microbial profiles and fermentation patterns in the large intestine of horses fed a high fiber or a high starch diet. *J Anim Sci* **80**, 2600-2609.
10. Moore BE, Newman KE, Spring P *et al.* (1994) Effect of yeast culture (Yea Sacc<sup>1026</sup>) on microbial populations and digestion in the cecum and colon of the equine. *J Anim Sci* **72**, 252.
11. Boeckert C, Vlaeminck B, Dijkstra J *et al.* (2008) Effect of dietary starch or micro algae supplementation on rumen fermentation and milk fatty acid composition of dairy cows. *J Dairy Sci* **91**, 4714-4727.
12. Castro-Carrera T, Toral PG, Frutos P *et al.* (2014) Rumen bacterial community evaluated by 454 pyrosequencing and terminal restriction fragment length polymorphism analyses in dairy sheep fed marine algae. *J Dairy Sci* **97**, 1661-1669.

13. Calder PC (2015) Marine omega-3 fatty acids and inflammatory processes: effects, mechanisms and clinical relevance. *Biochimica et Biophysica Acta (BBA)-Molecular and Cell Biology of Lipids* **1851**, 469-484.
14. Respondek F, Goachet A-G, Julliand V (2008) Effects of dietary short-chain fructooligosaccharides on the intestinal microflora of horses subjected to a sudden change in diet. *J Anim Sci* **86**, 316-323.
15. Grimm P, Julliand V, Philippeau C *et al.* (2016) Effect of yeast supplementation on hindgut microbiota and digestibility of horses subjected to an abrupt change of hays. *Livest Sci* **186**, 34-40.
16. Furtado CE, Barboza ED, Brandi RA *et al.* (2010) Use of yeast in equine fed diets with hay with different nutritional qualities. *Rev Bras Zootec* **39**, 2194-2199.
17. Murray J, Brown S, O'Shaughnessy P *et al.* (2016) Effect of live yeast culture supplementation on fibrolytic and saccharolytic bacterial populations in the faeces of horses fed a high-fibre or high-starch diet. *J Equine Vet Sci*.
18. Taran F, Gobesso A, Gonzaga I *et al.* (2016) Effects of different amounts of *Saccharomyces cerevisiae* supplementation on apparent digestibility and faecal parameters in horses fed high-roughage and high-concentrate diets. *Livest Sci* **186**, 29-33.
19. Mackenthun E, Coenen M, Vervuert I (2013) Effects of *Saccharomyces cerevisiae* supplementation on apparent total tract digestibility of nutrients and fermentation profile in healthy horses. *J Anim Physiol Anim Nutr* **97**, 115-120.
20. Berg EL, Fu CJ, Porter JH *et al.* (2005) Fructooligosaccharide supplementation in the yearling horse : effects on fecal pH, microbial content, and volatile fatty acid concentrations. *J Anim Sci* **83**, 1549-1553.
21. Proudman C, Hunter J, Darby A *et al.* (2015) Characterisation of the faecal metabolome and microbiome of Thoroughbred racehorses. *Equine Vet J* **47**, 580-586.
22. Faubladiere C, Chaucheyras-Durand F, da Veiga L *et al.* (2013) Effect of transportation on fecal bacterial communities and fermentative activities in horses: Impact of *Saccharomyces cerevisiae* CNCM I-1077 supplementation. *J Anim Sci* **91**, 1736-1744.
23. Van Weyenberg S, Sales J, Janssens G (2006) Passage rate of digesta through the equine gastrointestinal tract: A review. *Livest Sci* **99**, 3-12.
24. Julliand V, Grimm P (2016) HORSE SPECIES SYMPOSIUM: The microbiome of the horse hindgut: History and current knowledge. *J Anim Sci* **94**, 2262-2274.
25. INRA (1990) *Alimentation des chevaux*. Versailles: INRA editions.

26. Julliand V, De Fombelle A, Varloud M (2006) Starch digestion in horses : the impact of feed processing. *Livest Sci*, 1-9.
27. NRC (2007) *Nutrient Requirements of Horses: Sixth Revised Edition*. Washington, DC: The National Academies Press.
28. Bryant MP, Burkey LA (1953) Cultural methods and some characteristics of some of the more numerous groups of bacteria in the bovine rumen. *J Dairy Sci* **36**, 205-217.
29. Hungate RE (1969) A roll-tube method for cultivation of strict anaerobes. *Methods Microbiol* **3**, 117-132.
30. Leedle JAZ, Hespell RE (1980) Differential carbohydrate media and anaerobic replica plating techniques in delineating carbohydrate-utilizing subgroups in rumen bacteria populations. *Appl Environ Microbiol* **34**, 709-719.
31. Julliand V, de Vaux A, Millet L *et al.* (1999) Identification of *Ruminococcus flavefaciens* as the Predominant cellulolytic bacterial species of the equine cecum. *Appl Environ Microbiol* **65**, 3738-3741.
32. Mackie RI, Heath S (1979) Enumeration and isolation of lactate-utilizing bacteria from the rumen of sheep. *Appl Environ Microbiol* **38**, 416-421.
33. Lowe SE, Theodorou MK, Trinci APJ *et al.* (1985) Growth of anerobic rumen fungi on defined and semi-defined media lacking rumen fluid. *J Gen Microbiol* **131**, 2225-2229.
34. Clarke K, Owens N (1983) A simple and versatile micro-computer program for the determination of 'most probable number'. *J Microbiol Methods* **1**, 133-137.
35. Halliwell G, Bryant M (1963) The cellulolytic activity of pure strains of bacteria from the rumen of cattle. *Microbiology* **32**, 441-448.
36. Baruc CJ, Dawson KA, Baker JP (1983) The characterization and nitrogen metabolism of equine caecal bacteria. In *8th ENPS*, pp. 151-156. University of Kentucky.
37. Yu Z, Morrison M (2004) Improved extraction of PCR-quality community DNA from digesta and fecal samples. *Biotechniques* **36**, 808-813.
38. Liu Z, Lozupone C, Hamady M *et al.* (2007) Short pyrosequencing reads suffice for accurate microbial community analysis. *Nucleic Acids Res* **35**, e120.
39. Andersson AF, Lindberg M, Jakobsson H *et al.* (2008) Comparative analysis of human gut microbiota by barcoded pyrosequencing. *PloS one* **3**, e2836.
40. Escudié F, Auer L, Bernard M *et al.* (2017) FROGS: find, rapidly, OTUs with galaxy solution. *Bioinformatics* **34**, 1287-1294.

41. Pruesse E, Quast C, Knittel K *et al.* (2007) SILVA: a comprehensive online resource for quality checked and aligned ribosomal RNA sequence data compatible with ARB. *Nucleic Acids Res* **35**, 7188-7196.
42. Jouany JP (1982) Volatile fatty acid and alcohol determination in digestive contents, silage juices, bacterial cultures and anaerobic fermentor contents. *Sci Aliments* **2**, 131-144.
43. Sauvant D, Chapoutot P, Archimède H (1994) La digestion des amidons par les ruminants et ses conséquences. *INRA Prod Anim* **7**, 115-124.
44. Grimm P, Philippeau C, Julliand V (2017) Faecal parameters as biomarkers of the equine hindgut microbial ecosystem under dietary change. *Animal*, 1-10.
45. Pais de Barros J-P, Gautier T, Sali W *et al.* (2015) Quantitative lipopolysaccharide analysis using liquid chromatography-tandem mass spectrometry and its combination with the limulus amoebocyte lysate assay. *J Lipid Res*, jlr. D059725.
46. Hansen NC, Avershina E, Mydland LT *et al.* (2015) High nutrient availability reduces the diversity and stability of the equine caecal microbiota. *Microb Ecol Health Dis* **26**, 27216.
47. Bäckhed F, Fraser CM, Ringel Y *et al.* (2012) Defining a healthy human gut microbiome: current concepts, future directions, and clinical applications. *Cell host & microbe* **12**, 611-622.
48. Julliand V, de Fombelle A, Drogoul C *et al.* (2001) Feeding and microbial disorders in horses: 3- Effects of three hay:grain ratios on microbial profile and activities. *J Equine Vet Sci* **21**, 543-546.
49. Flint HJ, Scott KP, Duncan SH *et al.* (2012) Microbial degradation of complex carbohydrates in the gut. *Gut microbes* **3**, 289-306.
50. Biddle A, Stewart L, Blanchard J *et al.* (2013) Untangling the genetic basis of fibrolytic specialization by Lachnospiraceae and Ruminococcaceae in diverse gut communities. *Diversity* **5**, 627-640.
51. Ormerod KL, Wood DL, Lachner N *et al.* (2016) Genomic characterization of the uncultured Bacteroidales family S24-7 inhabiting the guts of homeothermic animals. *Microbiome* **4**, 36.
52. Hippe H, Hagelstein A, Kramer I *et al.* (1999) NOTE. *Int J Syst Evol Microbiol* **49**, 779-782.
53. Daly K, Proudman CJ, Duncan SH *et al.* (2012) Alterations in microbiota and fermentation products in equine large intestine in response to dietary variation and intestinal disease. *Br J Nutr* **107**, 989-995.
54. Paillard D, McKain N, Chaudhary LC *et al.* (2007) Relation between phylogenetic position, lipid metabolism and butyrate production by different *Butyrivibrio*-like bacteria from the rumen. *Antonie Van Leeuwenhoek* **91**, 417-422.

55. Boeckert C, Vlaeminck B, Fievez V *et al.* (2008) Accumulation of trans C18: 1 fatty acids in the rumen after dietary algal supplementation is associated with changes in the Butyrivibrio community. *Appl Environ Microbiol* **74**, 6923-6930.
56. Čepeljnik T, Križaj I, Marinšek-Logar R (2004) Isolation and characterization of the Pseudobutyrvibrio xylanivorans Mz5 T xylanase XynT—the first family 11 endoxylanase from rumen Butyrivibrio-related bacteria. *Enzyme Microb Technol* **34**, 219-227.
57. Zorec M, Vodovnik M, Marinšek-Logar R (2014) Potential of Selected Rumen Bacteria for Cellulose and Hemicellulose Degradation. *Food Technol Biotechnol* **52**, 210-221.
58. Pinloche E, McEwan N, Marden J-P *et al.* (2013) The effects of a probiotic yeast on the bacterial diversity and population structure in the rumen of cattle. *PLoS one* **8**, e67824.
59. Shingfield KJ, Kairenius P, Ärölä A *et al.* (2012) Dietary fish oil supplements modify ruminal biohydrogenation, alter the flow of fatty acids at the omasum, and induce changes in the ruminal Butyrivibrio population in lactating cows. *J Nutr* **142**, 1437-1448.
60. Zhu H, Fievez V, Mao S *et al.* (2016) Dose and time response of ruminally infused algae on rumen fermentation characteristics, biohydrogenation and Butyrivibrio group bacteria in goats. *J Anim Sci Biotechnol* **7**, 1.
61. de Jesus Raposo MF, de Morais AMMB, de Morais RMSC (2016) Emergent Sources of Prebiotics: Seaweeds and Microalgae. *Mar Drugs* **14**, 27.



Table 1: Nutritional and biochemical composition of the diets

| Item                       | 100 % Hay | 56% Hay<br>44% Barley |
|----------------------------|-----------|-----------------------|
| Net Energy (kcal/100kg BW) | 2562      | 2566                  |
| DM (%)                     | 87.0      | 86.9                  |
| CP*                        | 9.0       | 9.8                   |
| NDF*                       | 62.0      | 44.4                  |
| ADF*                       | 36.2      | 23.1                  |
| Hemicelluloses (NDF-ADF)*  | 25.8      | 21.3                  |
| Cellulose (ADF-ADL)*       | 31.4      | 20.0                  |
| ADL*                       | 4.8       | 3.1                   |
| Starch*                    | <1        | 27.9                  |

\* Percentage of the dry matter

Table 2: Richness and diversity indexes in the caecum, right ventral colon and faeces of horses fed the diets H (100% hay) and B (56% hay + 44% barley) and receiving (S) or not (NoS) a yeast/microalgae supplementation

|                        | H diet            |                   | B diet            |                   | S.e. |      | Effect, <i>P</i> -value |              |               |               |              |
|------------------------|-------------------|-------------------|-------------------|-------------------|------|------|-------------------------|--------------|---------------|---------------|--------------|
|                        | NoS               | S                 | NoS               | S                 | NoS  | S    | Period                  | Supp         | Diet          | Period x Diet | Supp x Diet  |
| <b>Caecum (n=18)</b>   |                   |                   |                   |                   |      |      |                         |              |               |               |              |
| Species number*        | 928 <sup>a</sup>  | 935 <sup>a</sup>  | 838 <sup>b</sup>  | 804 <sup>b</sup>  | 41   | 52   | 0.856                   | 0.773        | <b>0.039</b>  | 0.848         | 0.667        |
| Shannon                | 5.83 <sup>a</sup> | 5.94 <sup>a</sup> | 5.01 <sup>b</sup> | 5.22 <sup>b</sup> | 0.18 | 0.22 | 0.373                   | 0.520        | <b>0.009</b>  | 0.343         | 0.780        |
| Inverse Simpson        | 157 <sup>a</sup>  | 179 <sup>a</sup>  | 35 <sup>b</sup>   | 64 <sup>b</sup>   | 13   | 16   | 0.338                   | 0.174        | <b>0.0002</b> | 0.542         | 0.770        |
| <b>RV Colon (n=22)</b> |                   |                   |                   |                   |      |      |                         |              |               |               |              |
| Species number*        | 938               | 858               | 831               | 851               | 47   | 52   | 0.923                   | 0.559        | 0.269         | 0.772         | 0.331        |
| Shannon                | 5.75 <sup>A</sup> | 5.27 <sup>A</sup> | 4.81 <sup>B</sup> | 5.23 <sup>B</sup> | 0.26 | 0.29 | 0.234                   | 0.903        | 0.099         | 0.768         | 0.127        |
| Inverse Simpson        | 119 <sup>a</sup>  | 106 <sup>a</sup>  | 29 <sup>b</sup>   | 59 <sup>b</sup>   | 20   | 22   | 0.405                   | 0.699        | <b>0.006</b>  | 0.748         | 0.300        |
| <b>Faeces (n=22)</b>   |                   |                   |                   |                   |      |      |                         |              |               |               |              |
| Species number*        | 930 <sup>a</sup>  | 962 <sup>a</sup>  | 727 <sup>b</sup>  | 941 <sup>a</sup>  | 30   | 33   | <b>0.012</b>            | <b>0.004</b> | <b>0.011</b>  | <b>0.019</b>  | <b>0.026</b> |
| Shannon                | 5.58 <sup>a</sup> | 5.75 <sup>a</sup> | 4.54 <sup>b</sup> | 5.59 <sup>a</sup> | 0.16 | 0.18 | <b>0.015</b>            | <b>0.003</b> | <b>0.004</b>  | <b>0.004</b>  | <b>0.020</b> |
| Inverse Simpson        | 85 <sup>b</sup>   | 123 <sup>a</sup>  | 42 <sup>b</sup>   | 88 <sup>a</sup>   | 13   | 14   | 0.789                   | <b>0.043</b> | <b>0.008</b>  | <b>0.019</b>  | 0.697        |

<sup>a, b</sup> Values within a row are significantly different if superscript differs ( $P < 0.05$ )

<sup>A, B</sup> Values within a row tended to be significantly different if superscript differs ( $P < 0.1$ )

\* Number of OTUs

Table 3: Relative abundance of bacterial taxa showing significant (or trend) supplementation x diet interaction or supplementation effect in the caecum, RV colon and faeces of horses fed the diets H (100% hay) and B (56% hay + 44% barley) and receiving (S) or not (NoS) a yeast/microalgae supplementation

| Bacterial taxa (Phylum>Class>Family)  | H diet             |                    | B diet            |                    | S.e. |      | Effect, P-Value |              |
|---|--------------------|--------------------|-------------------|--------------------|------|------|-----------------|--------------|
|   | NoS                | S                  | NoS               | S                  | NoS  | S    | Supp            | Supp x Diet  |
| <b>Caecum(n=18)</b>   |                    |                    |                   |                    |      |      |                 |              |
| <b>Clostridiales family XIII</b> (Firmicutes>Clostridia)                      | 0.42 <sup>b</sup>  | 0.52 <sup>a</sup>  | 0.16 <sup>b</sup> | 0.38 <sup>a</sup>  | 0.06 | 0.08 | <b>0.025</b>    | 0.247        |
| <b>Lachnospiraceae</b> (Firmicutes>Clostridia)                                | 19.0 <sup>B</sup>  | 20.7 <sup>A</sup>  | 15.9 <sup>B</sup> | 21.9 <sup>A</sup>  | 2.3  | 2.6  | 0.067           | 0.224        |
| <i>Pseudobutyrvibrio</i> (Firmicutes>Clostridia>Lachnospiraceae)              | 1.34 <sup>b</sup>  | 1.58 <sup>a</sup>  | 1.72 <sup>b</sup> | 3.44 <sup>a</sup>  | 0.42 | 0.50 | <b>0.033</b>    | 0.076        |
| <i>Ruminoclostridium</i> (Firmicutes>Clostridia>Ruminococcaceae)              | 2.73 <sup>a</sup>  | 2.07 <sup>ab</sup> | 1.09 <sup>b</sup> | 2.72 <sup>a</sup>  | 0.52 | 0.63 | 0.438           | <b>0.033</b> |
| <b>RV Colon(n=22)</b>   |                    |                    |                   |                    |      |      |                 |              |
| <b>Bacteroidales S24-7</b> (Bacteroidetes>Bacteroidia)                        | 9.79 <sup>a</sup>  | 6.44 <sup>a</sup>  | 5.04 <sup>b</sup> | 9.96 <sup>a</sup>  | 1.78 | 1.99 | 0.679           | <b>0.047</b> |
| <i>Prevotella</i> (Bacteroidetes>Bacteroidia>Prevotellaceae)                  | 5.87 <sup>A</sup>  | 5.39 <sup>A</sup>  | 2.45 <sup>B</sup> | 6.87 <sup>A</sup>  | 1.33 | 1.46 | 0.117           | 0.054        |
| <b>Lachnospiraceae NC2004</b> (Firmicutes>Clostridia>Lachnospiraceae)         | 0.47 <sup>a</sup>  | 0.34 <sup>ab</sup> | 0.10 <sup>b</sup> | 0.25 <sup>ab</sup> | 0.09 | 0.10 | 0.917           | <b>0.005</b> |
| <b>Veillonellaceae</b> (Firmicutes>Negativicutes)                             | 0.57 <sup>c</sup>  | 0.34 <sup>c</sup>  | 1.52 <sup>b</sup> | 3.28 <sup>a</sup>  | 0.54 | 0.59 | 0.105           | <b>0.037</b> |
| <b>Faeces(n=22)</b>   |                    |                    |                   |                    |      |      |                 |              |
| <b>Bacteroidetes</b>  | 36.9 <sup>A</sup>  | 37.0 <sup>A</sup>  | 25.7 <sup>B</sup> | 38.0 <sup>A</sup>  | 3.1  | 3.4  | 0.080           | 0.085        |
| <b>Bacteroidia</b> (Bacteroidetes)  | 35.8 <sup>A</sup>  | 36.2 <sup>A</sup>  | 25.1 <sup>B</sup> | 37.4 <sup>A</sup>  | 3.1  | 3.4  | 0.071           | 0.089        |
| <b>Bacteroidales BS11 gut</b> (Bacteroidetes>Bacteroidia)                     | 3.86 <sup>b</sup>  | 5.28 <sup>b</sup>  | 4.41 <sup>b</sup> | 10.5 <sup>a</sup>  | 1.53 | 1.62 | <b>0.003</b>    | <b>0.034</b> |
| <b>Prevotellaceae</b> (Bacteroidetes>Bacteroidia)                             | 10.6 <sup>a</sup>  | 10.1 <sup>a</sup>  | 4.4 <sup>b</sup>  | 10.0 <sup>a</sup>  | 0.82 | 0.91 | <b>0.034</b>    | <b>0.004</b> |
| <i>Alloprevotella</i> (Bacteroidetes>Bacteroidia>Prevotellaceae)              | 0.69 <sup>ab</sup> | 0.44 <sup>b</sup>  | 0.33 <sup>b</sup> | 1.34 <sup>a</sup>  | 0.19 | 0.21 | 0.052           | <b>0.004</b> |
| <b>Prevotellaceae UCG001</b> (Bacteroidetes>Bacteroidia>Prevotellaceae)       | 2.79 <sup>a</sup>  | 2.37 <sup>ab</sup> | 1.22 <sup>b</sup> | 3.46 <sup>a</sup>  | 0.40 | 0.45 | 0.139           | <b>0.001</b> |
| <b>Clostridia</b> (Firmicutes)  | 53.2 <sup>A</sup>  | 51.7 <sup>A</sup>  | 41.7 <sup>B</sup> | 51.7 <sup>A</sup>  | 3.9  | 4.2  | 0.210           | 0.095        |
| <b>Clostridiales vadin BB60</b> (Firmicutes>Clostridia)                       | 0.08 <sup>b</sup>  | 0.27 <sup>a</sup>  | 0.05 <sup>b</sup> | 0.11 <sup>a</sup>  | 0.04 | 0.04 | <b>0.010</b>    | 0.132        |
| <b>Clostridiales family XIII</b> (Firmicutes>Clostridia)                      | 1.30 <sup>b</sup>  | 1.59 <sup>a</sup>  | 1.03 <sup>b</sup> | 1.85 <sup>a</sup>  | 0.23 | 0.26 | <b>0.037</b>    | 0.285        |
| <i>Anaerovorax</i> (Firmicutes>Clostridia>Family XIII)                        | 0.83 <sup>b</sup>  | 1.00 <sup>a</sup>  | 0.56 <sup>b</sup> | 1.12 <sup>a</sup>  | 0.16 | 0.18 | <b>0.049</b>    | 0.259        |
| <i>Coprococcus</i> (Firmicutes>Clostridia>Lachnospiraceae)                    | 0.13 <sup>b</sup>  | 0.18 <sup>a</sup>  | 0.07 <sup>b</sup> | 0.18 <sup>a</sup>  | 0.04 | 0.04 | <b>0.035</b>    | 0.326        |
| <i>Eubacterium ruminantium group</i> (Firmicutes>Clostridia>Lachnospiraceae)  | 0.16 <sup>b</sup>  | 0.42 <sup>a</sup>  | 0.06 <sup>b</sup> | 0.11 <sup>b</sup>  | 0.05 | 0.05 | <b>0.004</b>    | <b>0.036</b> |
| <b>Lachnospiraceae UCG002</b> (Firmicutes>Clostridia>Lachnospiraceae)         | 0.03 <sup>b</sup>  | 0.04 <sup>a</sup>  | 0.01 <sup>b</sup> | 0.04 <sup>a</sup>  | 0.01 | 0.01 | <b>0.011</b>    | 0.280        |
| <b>Ruminococcaceae</b> (Firmicutes>Clostridia)                                | 17.3 <sup>ab</sup> | 18.1 <sup>ab</sup> | 16.4 <sup>b</sup> | 23.6 <sup>a</sup>  | 1.3  | 1.4  | <b>0.038</b>    | <b>0.029</b> |
| <i>Candidatus Soleaferrea</i> (Firmicutes>Clostridia>Ruminococcaceae)         | 0.30 <sup>b</sup>  | 0.38 <sup>a</sup>  | 0.34 <sup>b</sup> | 0.63 <sup>a</sup>  | 0.07 | 0.08 | <b>0.031</b>    | 0.182        |
| <b>Ruminococcaceae UCG002</b> (Firmicutes>Clostridia>Ruminococcaceae)         | 0.97 <sup>b</sup>  | 1.44 <sup>a</sup>  | 1.52 <sup>b</sup> | 2.98 <sup>a</sup>  | 0.30 | 0.33 | <b>0.008</b>    | 0.138        |
| <b>Veillonellaceae</b> (Firmicutes>Negativicutes)                             | 0.26 <sup>AB</sup> | 0.15 <sup>AB</sup> | 0.11 <sup>B</sup> | 0.33 <sup>A</sup>  | 0.08 | 0.09 | 0.578           | 0.098        |
| <i>Sutterella</i> (Proteobacteria>Betaproteobacteria>Alcaligenaceae)          | 0.02 <sup>b</sup>  | 0.07 <sup>a</sup>  | 0.02 <sup>b</sup> | 0.04 <sup>a</sup>  | 0.01 | 0.01 | <b>0.018</b>    | 0.416        |
| <i>Desulfovibrio</i> (Proteobacteria>Deltaproteobacteria>Desulfovibrionaceae) | 0.21 <sup>b</sup>  | 0.22 <sup>a</sup>  | 0.05 <sup>b</sup> | 0.15 <sup>a</sup>  | 0.03 | 0.03 | <b>0.049</b>    | 0.142        |

<sup>a, b</sup> Values within a row are significantly different if superscript differs (P<0.05)

<sup>A, B</sup> Values within a row tended to be significantly different if superscript differs (P<0.1)

Table 4: Bacterial functional group concentrations in the caecum, RV colon and faeces of horses depending on sampling day within the diets H (100% hay) and B (56% hay + 44% barley) irrespective of supplementation

| Item                   | Sampling Day      |                    |                    |                   | S.e. |      | Effect, P-value |       |                  |              |            |                  |
|------------------------|-------------------|--------------------|--------------------|-------------------|------|------|-----------------|-------|------------------|--------------|------------|------------------|
|                        | H.17              | H.27               | B.10               | B.20              | H    | B    | Period          | Supp  | Day              | Period x Day | Supp x Day | Diet*            |
| <b>Caecum (n=36)</b>   |                   |                    |                    |                   |      |      |                 |       |                  |              |            |                  |
| Total anaerobes        | 6.97              | 7.44               | 7.80               | 7.45              | 0.31 | 0.31 | 0.243           | 0.227 | 0.249            | 0.682        | 0.975      |                  |
| Cellulose-utilisers    | 5.24              | 5.26               | 4.28               | 4.20              | 0.16 | 0.24 | 0.360           | 0.889 | <b>0.003</b>     | <b>0.022</b> | 0.328      |                  |
| Starch-utilisers       | 5.89              | 6.01               | 6.64               | 6.53              | 0.19 | 0.30 | 0.476           | 0.917 | 0.125            | 0.645        | 0.799      |                  |
| Lactate-utilisers      | 6.08 <sup>b</sup> | 6.21 <sup>ab</sup> | 6.93 <sup>a</sup>  | 6.89 <sup>a</sup> | 0.23 | 0.21 | 0.425           | 0.494 | <b>0.007</b>     | 0.774        | 0.924      | <b>0.0004</b>    |
| <b>RV Colon (n=44)</b> |                   |                    |                    |                   |      |      |                 |       |                  |              |            |                  |
| Total anaerobes        | 6.74 <sup>b</sup> | 6.78 <sup>b</sup>  | 7.75 <sup>a</sup>  | 7.72 <sup>a</sup> | 0.34 | 0.26 | 0.600           | 0.097 | <b>0.002</b>     | 0.698        | 0.365      | <b>0.0001</b>    |
| Cellulose-utilisers    | 5.02 <sup>a</sup> | 4.67 <sup>ab</sup> | 4.82 <sup>ab</sup> | 4.11 <sup>b</sup> | 0.12 | 0.19 | 0.237           | 0.352 | <b>0.008</b>     | 0.325        | 0.970      | <b>0.025</b>     |
| Starch-utilisers       | 5.52 <sup>b</sup> | 5.59 <sup>b</sup>  | 6.63 <sup>a</sup>  | 6.58 <sup>a</sup> | 0.13 | 0.21 | <b>0.007</b>    | 0.902 | <b>0.0002</b>    | 0.273        | 0.661      | <b>0.0001</b>    |
| Lactate-utilisers      | 5.73 <sup>b</sup> | 6.08 <sup>b</sup>  | 6.92 <sup>a</sup>  | 6.90 <sup>a</sup> | 0.24 | 0.14 | <b>0.018</b>    | 0.497 | <b>0.0001</b>    | 0.174        | 0.279      | <b>&lt;.0001</b> |
| <b>Faeces (n=44)</b>   |                   |                    |                    |                   |      |      |                 |       |                  |              |            |                  |
| Total anaerobes        | 6.81 <sup>c</sup> | 7.17 <sup>bc</sup> | 7.84 <sup>ab</sup> | 8.08 <sup>a</sup> | 0.27 | 0.12 | 0.060           | 0.669 | <b>0.001</b>     | 0.433        | 0.352      | <b>0.0001</b>    |
| Cellulose-utilisers    | 5.55 <sup>a</sup> | 5.07 <sup>ab</sup> | 4.44 <sup>b</sup>  | 4.07 <sup>b</sup> | 0.22 | 0.27 | 0.493           | 0.313 | <b>0.002</b>     | 0.097        | 0.119      | <b>0.0002</b>    |
| Starch-utilisers       | 5.81 <sup>c</sup> | 6.30 <sup>bc</sup> | 6.90 <sup>ab</sup> | 7.25 <sup>a</sup> | 0.15 | 0.22 | <b>0.045</b>    | 0.741 | <b>0.0002</b>    | 0.162        | 0.872      | <b>&lt;.0001</b> |
| Lactate-utilisers      | 5.97 <sup>b</sup> | 6.25 <sup>b</sup>  | 7.17 <sup>a</sup>  | 7.68 <sup>a</sup> | 0.22 | 0.17 | 0.608           | 0.580 | <b>&lt;.0001</b> | 0.286        | 0.564      | <b>&lt;.0001</b> |

\*Orthogonal contrasts testing the diet (H vs B) was performed only if a sampling day effect was significant

<sup>a, b</sup> Values within a row are significantly different if superscript differs (P<0.05)

Table 5: Biochemical parameters in the caecum, RV colon and faeces of horses depending on sampling day within diets H (100% hay) and B (56% hay + 44% barley) irrespective of supplementation

| Item                      | Sampling Day       |                    |                    |                    |                    |                    | S.e. |      | Effect, <i>P</i> -value |       |                  |              |            |                  |
|---------------------------|--------------------|--------------------|--------------------|--------------------|--------------------|--------------------|------|------|-------------------------|-------|------------------|--------------|------------|------------------|
|                           | H.17               | H.22               | H.27               | B.10               | B.15               | B.20               | H    | B    | Period                  | Supp  | Day              | Period x Day | Supp x Day | Diet*            |
| <b>Caecum (n=53)</b>      |                    |                    |                    |                    |                    |                    |      |      |                         |       |                  |              |            |                  |
| pH                        | 6.73               | 6.69               | 6.70               | 6.73               | 6.79               | 6.85               | 0.04 | 0.06 | 0.075                   | 0.277 | 0.217            | 0.066        | 0.120      |                  |
| Total VFAs <sup>†</sup>   | 54.2 <sup>ab</sup> | 48.1 <sup>b</sup>  | 56.7 <sup>a</sup>  | 50.1 <sup>ab</sup> | 46.3 <sup>ab</sup> | 49.9 <sup>ab</sup> | 2.5  | 3.3  | 0.853                   | 0.400 | <b>0.028</b>     | 0.623        | 0.561      | <b>0.040</b>     |
| Acetate <sup>†</sup>      | 39.5 <sup>a</sup>  | 34.8 <sup>ab</sup> | 40.9 <sup>a</sup>  | 32.6 <sup>b</sup>  | 30.7 <sup>b</sup>  | 33.9 <sup>ab</sup> | 1.6  | 2.1  | 0.349                   | 0.445 | <b>0.002</b>     | 0.472        | 0.615      | <b>0.0001</b>    |
| Propionate <sup>†</sup>   | 10.2 <sup>b</sup>  | 9.7 <sup>b</sup>   | 11.3 <sup>ab</sup> | 13.9 <sup>a</sup>  | 12.6 <sup>ab</sup> | 12.9 <sup>ab</sup> | 0.7  | 1.1  | 0.292                   | 0.471 | <b>0.007</b>     | 0.538        | 0.531      | <b>0.0005</b>    |
| Butyrate <sup>†</sup>     | 4.03               | 3.35               | 4.12               | 3.15               | 2.49               | 2.77               | 0.29 | 0.20 | 0.277                   | 0.338 | <b>0.0005</b>    | <b>0.036</b> | 0.217      |                  |
| Valerate <sup>†</sup>     | 0.20 <sup>b</sup>  | 0.09 <sup>b</sup>  | 0.19 <sup>ab</sup> | 0.23 <sup>a</sup>  | 0.20 <sup>ab</sup> | 0.20 <sup>ab</sup> | 0.04 | 0.02 | 0.448                   | 0.320 | 0.095            | 0.281        | 0.242      | <b>0.035</b>     |
| [(C2+C4)/C3] <sup>‡</sup> | 4.29 <sup>a</sup>  | 3.94 <sup>a</sup>  | 4.00 <sup>a</sup>  | 2.65 <sup>b</sup>  | 2.66 <sup>b</sup>  | 2.88 <sup>b</sup>  | 0.15 | 0.16 | 0.140                   | 0.944 | <b>&lt;.0001</b> | 0.078        | 0.616      | <b>&lt;.0001</b> |
| D-lactate <sup>†</sup>    | 0.21               | 0.16               | 0.18               | 0.90               | 1.13               | 0.71               | 0.05 | 0.46 | 0.335                   | 0.240 | 0.225            | 0.391        | 0.526      |                  |
| L-lactate <sup>†</sup>    | 0.17               | 0.18               | 0.12               | 2.22               | 4.47               | 1.41               | 0.06 | 2.95 | 0.819                   | 0.554 | 0.736            | 0.723        | 0.714      |                  |
| <b>RV Colon (n=65)</b>    |                    |                    |                    |                    |                    |                    |      |      |                         |       |                  |              |            |                  |
| pH                        | 6.87               | 6.77               | 6.73               | 6.78               | 6.85               | 6.90               | 0.07 | 0.07 | <b>&lt;.0001</b>        | 0.386 | <b>0.002</b>     | <b>0.001</b> | 0.335      |                  |
| Total VFAs <sup>†</sup>   | 58.2               | 57.2               | 63.3               | 61.9               | 59.2               | 62.1               | 5.2  | 6.6  | 0.581                   | 0.366 | 0.679            | 0.783        | 0.560      |                  |
| Acetate <sup>†</sup>      | 41.8               | 41.0               | 44.7               | 41.3               | 40.1               | 41.5               | 4.0  | 4.7  | 0.731                   | 0.428 | 0.835            | 0.661        | 0.594      |                  |
| Propionate <sup>†</sup>   | 10.8               | 11.1               | 12.1               | 14.4               | 13.7               | 14.0               | 0.7  | 1.7  | 0.838                   | 0.256 | 0.109            | 0.998        | 0.577      |                  |
| Butyrate <sup>†</sup>     | 4.42               | 4.13               | 5.20               | 4.65               | 3.96               | 4.91               | 0.64 | 0.74 | 0.128                   | 0.805 | 0.053            | 0.137        | 0.764      | 0.789            |
| Valerate <sup>†</sup>     | 0.23 <sup>b</sup>  | 0.18 <sup>b</sup>  | 0.34 <sup>ab</sup> | 0.58 <sup>a</sup>  | 0.41 <sup>ab</sup> | 0.52 <sup>a</sup>  | 0.07 | 0.10 | 0.345                   | 0.405 | <b>0.0005</b>    | 0.338        | 0.725      | <b>&lt;.0001</b> |
| [(C2+C4)/C3] <sup>‡</sup> | 4.33 <sup>a</sup>  | 4.11 <sup>a</sup>  | 4.16 <sup>a</sup>  | 3.33 <sup>b</sup>  | 3.24 <sup>b</sup>  | 3.35 <sup>b</sup>  | 0.25 | 0.29 | 0.912                   | 0.569 | <b>0.017</b>     | 0.634        | 0.866      | <b>&lt;.0001</b> |
| D-lactate <sup>†</sup>    | 0.45               | 0.12               | 0.13               | 0.46               | 0.42               | 0.74               | 0.25 | 0.19 | 0.300                   | 0.358 | 0.125            | 0.839        | 0.276      |                  |
| L-lactate <sup>†</sup>    | 0.42               | 0.10               | 0.06               | 1.75               | 3.49               | 1.27               | 0.20 | 1.98 | 0.686                   | 0.415 | 0.383            | 0.832        | 0.840      |                  |
| <b>Faeces (n=65)</b>      |                    |                    |                    |                    |                    |                    |      |      |                         |       |                  |              |            |                  |
| pH                        | 6.87               | 6.72               | 6.73               | 6.38               | 6.40               | 6.50               | 0.08 | 0.10 | <b>0.068</b>            | 0.193 | <b>0.003</b>     | <b>0.036</b> | 0.528      |                  |
| Total VFAs <sup>†</sup>   | 33.2 <sup>b</sup>  | 33.9 <sup>b</sup>  | 35.5 <sup>b</sup>  | 45.0 <sup>ab</sup> | 53.1 <sup>a</sup>  | 45.8 <sup>ab</sup> | 2.17 | 4.1  | 0.199                   | 0.737 | <b>0.0006</b>    | 0.387        | 0.711      | <b>&lt;.0001</b> |
| Acetate <sup>†</sup>      | 23.8 <sup>b</sup>  | 23.9 <sup>b</sup>  | 25.1 <sup>b</sup>  | 32.6 <sup>ab</sup> | 38.3 <sup>a</sup>  | 32.4 <sup>ab</sup> | 1.55 | 3.1  | 0.165                   | 0.711 | <b>0.0008</b>    | 0.332        | 0.803      | <b>&lt;.0001</b> |
| Propionate <sup>†</sup>   | 6.27 <sup>b</sup>  | 6.73 <sup>b</sup>  | 7.05 <sup>ab</sup> | 8.46 <sup>ab</sup> | 9.63 <sup>a</sup>  | 8.89 <sup>ab</sup> | 0.58 | 0.95 | 0.575                   | 0.735 | <b>0.007</b>     | 0.552        | 0.351      | <b>0.0001</b>    |
| Butyrate <sup>†</sup>     | 1.85 <sup>b</sup>  | 1.98 <sup>b</sup>  | 2.06 <sup>b</sup>  | 2.46 <sup>ab</sup> | 3.07 <sup>a</sup>  | 2.64 <sup>ab</sup> | 0.17 | 0.25 | 0.484                   | 0.960 | <b>0.002</b>     | 0.680        | 0.551      | <b>&lt;.0001</b> |
| Valerate <sup>†</sup>     | 0.21 <sup>b</sup>  | 0.24 <sup>b</sup>  | 0.24 <sup>b</sup>  | 0.50 <sup>ab</sup> | 0.66 <sup>a</sup>  | 0.58 <sup>a</sup>  | 0.04 | 0.10 | 0.082                   | 0.774 | <b>0.0007</b>    | 0.886        | 0.924      | <b>&lt;.0001</b> |
| [(C2+C4)/C3] <sup>‡</sup> | 4.24               | 3.99               | 4.04               | 4.39               | 4.45               | 4.10               | 0.29 | 0.42 | 0.286                   | 0.565 | 0.495            | 0.222        | 0.346      |                  |
| D-lactate <sup>†</sup>    | 0.48               | 0.33               | 0.36               | 0.41               | 0.37               | 0.42               | 0.06 | 0.08 | 0.090                   | 0.346 | 0.569            | 0.168        | 0.890      |                  |
| L-lactate <sup>†</sup>    | 0.52               | 0.33               | 0.44               | 0.43               | 0.41               | 0.43               | 0.04 | 0.03 | <b>0.036</b>            | 0.603 | <b>0.049</b>     | <b>0.004</b> | 0.738      |                  |

\* Orthogonal contrasts testing the diet (H vs B) was performed only if a sampling day effect was significant

<sup>a,b</sup> Values within a row are significantly different if superscript differs ( $P < 0.05$ )

<sup>†</sup> mmol/L

<sup>‡</sup> C2=Acetate; C4= Butyrate; C3=Propionate