



HAL
open science

Association Between Growth Differentiation Factor-15 and Heart Failure Complicating Acute Myocardial Infarction

Alexandre Meloux, Luc Rochette, Maud Maza, Florence Bichat, Yves Cottin,
Marianne Zeller, Catherine Vergely

► **To cite this version:**

Alexandre Meloux, Luc Rochette, Maud Maza, Florence Bichat, Yves Cottin, et al.. Association Between Growth Differentiation Factor-15 and Heart Failure Complicating Acute Myocardial Infarction. *Cardiology and Cardiovascular Medicine*, 2020, 04 (6), pp.773-789. 10.26502/fccm.92920174 . hal-03413459

HAL Id: hal-03413459

<https://u-bourgogne.hal.science/hal-03413459>

Submitted on 3 Nov 2021

HAL is a multi-disciplinary open access archive for the deposit and dissemination of scientific research documents, whether they are published or not. The documents may come from teaching and research institutions in France or abroad, or from public or private research centers.

L'archive ouverte pluridisciplinaire **HAL**, est destinée au dépôt et à la diffusion de documents scientifiques de niveau recherche, publiés ou non, émanant des établissements d'enseignement et de recherche français ou étrangers, des laboratoires publics ou privés.

Case Report

Association Between Growth Differentiation Factor-15 and Heart Failure Complicating Acute Myocardial Infarction

Alexandre Meloux^{1,2}, Luc Rochette¹, Maud Maza², Florence Bichat², Yves Cottin^{1,2}, Marianne Zeller¹, Catherine Vergely^{*1}

¹Laboratoire « Physiopathologie et Epidémiologie Cérébro-Cardiovasculaires » (PEC2, EA 7460), Université de Bourgogne-Franche-Comté; UFR des Sciences de Santé; 7 Bd Jeanne d'Arc, 21000, Dijon, France

²Department of Cardiology – Dijon Bourgogne University Hospital, France

***Corresponding Author:** Catherine Vergely, Laboratoire « Physiopathologie et Epidémiologie Cérébro-Cardiovasculaires » (PEC2, EA 7460), Université de Bourgogne-Franche-Comté; UFR des Sciences de Santé; 7 Bd Jeanne d'Arc, 21000, Dijon, France, Tel: +33-380393292; Fax: +33-380393293; E-mail: cvergely@u-bourgogne.fr

Received: 20 November 2020; **Accepted:** 03 December 2020; **Published:** 21 December 2020

Citation: Alexandre Meloux, Luc Rochette, Maud Maza, Florence Bichat, Yves Cottin, Marianne Zeller, Catherine Vergely. Association Between Growth Differentiation Factor-15 and Heart Failure Complicating Acute Myocardial Infarction. *Cardiology and Cardiovascular Medicine* 4 (2020): 773-789.

Abstract

Background - Growth differentiation factor-15 (GDF15) is an emerging biomarker in cardiovascular diseases. We aimed to evaluate the association of GDF15 levels at admission with HF occurrence during hospitalization for acute myocardial infarction (AMI).

Methods - Our prospective study included all patients admitted from June 2016 to February 2018 for type 1 AMI in the coronary care unit of the Dijon-Bourgogne University Hospital. In-hospital severe

heart failure (HF) was defined as Killip class >2. Serum levels of GDF15 were obtained from blood samples were taken on admission.

Results – Among the 284 AMI patients, median age was 67 years, and 27% were women. GDF15 levels were strongly correlated with age and positively correlated with most cardiovascular risk factors (hypertension and diabetes) and inflammation (CRP>3 mg/L). When compared with patients without HF (274/284), GDF15 in patients with in-hospital HF (10/284) was more than two times

higher. Multivariate regression showed that GDF15 >5,000 ng/L was an independent marker of HF.

Conclusions - These results suggest that GDF15 could be an integrative biomarker for severe in-hospital HF in patients with AMI. Further studies are needed to elucidate the underlying mechanisms linking this cytokine to the development of HF.

Clinical Trial BIOCARDIS - 2016 - 9205AAO034S02117, from June 2016 to February 2018

Key words: Heart failure; GDF15; AMI, biomarker

Background

Patients with acute myocardial infarction (AMI) constitute a large and heterogeneous group in terms of severe outcomes and subsequent death. Heart failure (HF) is a frequent complication of AMI and is associated with high mortality and re-hospitalization rates [1]. HF has an incidence ranging from 14% to 36% in AMI [2]. It is characterized by signs such as crackles, lung rales, tachycardia, pulmonary edema, hypotension and electrocardiographic abnormalities. The gravity of HF is indicated through the Killip classification. Both severe (cardiogenic shock) and less severe states of HF have major adverse consequences and may require specific treatments. Therefore, adequate stratification of patients who are at risk of developing HF in the context of post-AMI may be helpful in estimating prognosis and could be used to guide the cardiologist in clinical decision making. Indeed, cardiac biomarkers such as cardiac Troponin (c-Tn) or N-Terminal pro-Brain Natriuretic Peptide (NT-proBNP) [3,4] currently provide

prognostic information for both short- and long-term risk in patients with AMI. However, newer and more specific biomarkers may be helpful in providing additional information that is not provided by classic biomarkers.

Growth differentiation factor 15 (GDF15) is a stress-responsive cytokine which belongs to the transforming growth factor- β superfamily, but which finally appears to be closer to the glial cell-derived neurotrophic factors [5]. Although GDF15 is weakly expressed in normal healthy conditions in human tissues (except in the placenta), GDF15 can be produced by many cardiovascular and non-cardiovascular cell types under certain pathological situations mainly related to inflammatory stress. Circulating levels of GDF15 reflect acute and chronic cellular stressors which are associated with aging and disease [6,7]. Indeed, in cardiovascular (CV) diseases, GDF15 is an emerging biomarker [8] with strong predictive value for all-cause mortality. In patients with AMI, GDF15 has been recognized as a consistent biomarker of mortality and has been used for long-term follow-up in patients with non ST-elevation MI [9-13]. In this context, GDF15 provides prognostic information in addition to what is provided by other clinical or biochemical biomarkers including cTnT and NT-proBNP [10, 14-16]. Other data also suggest that GDF15 can be used as a biomarker in acute or chronic HF [17-21]. Initial studies by Kempf *et al.* led to the emergence of GDF15 as a new biomarker for the risk of death in patients with chronic HF [17]. In patients with acute HF, higher GDF15 was associated with worse prognosis independently of NT-proBNP [18]. In compensated patients, the NT-proBNP/GDF15 ratio distinguished between individuals with preserved and

reduced ejection fractions [19], and a significant increase in GDF15 in the 6 months following the event was associated in a worse outcome, suggesting that beyond hemodynamic burden (NT-proBNP), inflammatory status (GDF15) may be involved in both HF syndromes [20]. In a meta-analysis including 20,920 HF patients, GDF15 was found to be a strong prognostic biomarker of all-cause mortality [21]. However, there are currently few data concerning the use of GDF15 as a prognostic marker for HF in a context of AMI.

Therefore, the aim of the present study was to evaluate the prognostic value of GDF15 levels at admission as a predictor of HF occurrence during hospitalization for AMI.

Methods

Patients

In this prospective study, all consecutive patients admitted from June 2016 to February 2018 for type 1 AMI in the coronary care unit from the Dijon Bourgogne University Hospital (France) were included in the RICO database (ObseRvatoire des Infarctus de Côte-d'Or). The methods and design of this French regional survey of AMI have been previously described [22]. AMI was diagnosed in accordance with the third universal MI definition [23]. Patients with previous HF as well as patients with Killip > 2 on admission were excluded. Severe HF was defined by Killip class > 2. Patients were separated into two groups (no HF group (nHFg) and a HF group (HFg)). This study protocol conforms to the ethical guidelines of the Declaration of Helsinki. All of the participants provided consent prior to

inclusion, and the Ethics Committee of the University Hospital of Dijon approved the protocol (BIOCARDIS - 2016 – 9205AAO034S02117).

Data collection

Patient's demographic data, cardiovascular risk factors and history, biological data from blood collected on admission, chronic and acute medications and in-hospital events were collected similar to clinical and biological data as described before [24]. In order to assess the mortality risk, the GRACE score was calculated [25]. Echocardiography was used to determine left ventricular ejection fraction (LVEF).

Determination of serum GDF15

Blood samples were collected, on admission, from a vein of the arm, and immediately centrifuged at 4°C to separate the serum. The samples were then stored at -80°C until use. Serum GDF15 was measured in duplicate using a commercially available kit (DGD150, R&D systems, MN). The minimum detectable concentration was 2 ng/L, and the coefficient of variation between duplicates did not exceed 10%.

Statistical analysis

Statistical analysis was performed as described before [24].

Bivariate linear regression analyses were used to adjust GDF15 with age.

Results

Baseline characteristics

The study flow chart is presented in Figure 1.

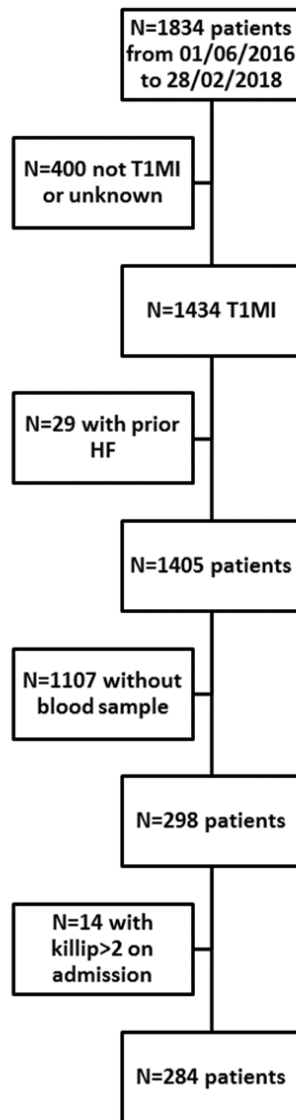


Figure 1: Study flow chart

MI: myocardial infarction; HF: heart failure

Among the 284 included patients, seventy-six (27%) were female, the median age was 67 years, 66 (23%) had diabetes and 168 (59%) had hypertension. Median GDF15 was 1,131 (771-1,811) ng/L. Overall, 10 (4%) patients presented HF during the hospital stay while the remaining 274 (96%) patients did not. Table 1 presents the characteristics of patients with and without HF.

	nHFg (n = 274)	HFg (n = 10)	p value
CV risk factors			
Age (years)	67 (57-78)	79 (71-86)	0.023
Female	73 (27)	3 (30)	0.730
BMI (kg/m ²)	26 (24-30)	28 (24-30)	0.954
Hypertension	162 (59)	6 (60)	1.000
Diabetes	63 (23)	3 (30)	0.703
Hypercholesterolemia	105 (38)	2 (20)	0.329
Family history of CAD	69 (25)	1 (10)	0.460
Current smoking	83 (30)	1 (10)	0.290
CV history			
CAD	45 (16)	2 (20)	0.673
Stroke	16 (6)	0 (0)	1.000
Chronic kidney disease	13 (5)	1 (10)	0.402
Clinical data			
LVEF	55 (50-60)	45 (36-61)	0.111
HR (bpm)	76 (64-86)	73 (57-107)	0.892
SBP (mmHg)	142 (124-165)	121 (110-144)	0.027
DBP (mmHg)	82 (70-94)	75 (56-91)	0.233
STEMI	134 (49)	6 (60)	0.537
GRACE risk score	138 (115-166)	186 (145-192)	0.010
ICU stay length (days)	3 (3-4)	5 (5-9)	< 0.001
Biological data			
CRP \geq 3 mg/L	141 (52)	8 (80)	0.111
Creatinine clearance (CKD EPI) (mL/min)	85 (68-97)	69 (44-80)	0.020
Peak troponin Ic (ng/mL)	15 (3-73)	22 (1-53)	0.555
NT-proBNP (pg/mL)	352 (84-1,415)	2217 (783-8,401)	0.010
Glucose (mmol/L)	7 (6-8)	7 (6-9)	0.483
LDL cholesterol (g/L)	1.3 (1.0-1.5)	0.9 (0.6-1.1)	0.019
HDL cholesterol (g/L)	0.5 (0.4-0.6)	0.6 (0.4-0.7)	0.166
Triglycerides (g/L)	1.2 (0.8-1.8)	1.0 (0.6-1.3)	0.115
Chronic medications			
Antiplatelet	23 (8)	0 (0)	1.000
Aspirin	63 (23)	4 (40)	0.253

ARB	55 (20)	2 (20)	1.000
ACE inhibitors	53 (19)	2 (20)	1.000
Statin	81 (30)	3 (30)	1.000
Beta-blockers	72 (26)	3 (30)	0.727
Acute medications			
Antiplatelet	264 (96)	8 (80)	0.061
Aspirin	270 (98)	8 (80)	0.016
ARB	34 (12)	0 (0)	0.614
ACE inhibitors	171 (62)	1 (10)	0.001
Statin	253 (92)	7 (70)	0.043
Beta-blockers	198 (72)	2 (20)	0.001

Table 1: Patients' characteristics on admission

Data are expressed as n (%) or mean (\pm standard deviation) or median (25th and 75th percentiles)

n: number; BMI: body mass index; CAD: coronary artery disease; LVEF: left ventricular ejection fraction; HR: heart rate; SBP: systolic blood pressure; DBP: diastolic blood pressure; STEMI: ST segment elevation myocardial infarction; GRACE: Global Registry of Acute Coronary Events; ICU: Intensive Care Unit; CRP: C-reactive protein; NT-proBNP: N-terminal pro-brain natriuretic peptide; LDL: low density lipoprotein; HDL: high density lipoprotein; ARB: angiotensin II receptor blockers; ACE inhibitors: angiotensin converting enzyme inhibitors.

HF patients were older, but otherwise no differences were reported in CV risk factors or in CV history

between the two groups. From a clinical point of view, HF patients had lower systolic blood pressure on admission and higher GRACE risk scores. Renal function was more impaired in HF patients (eGFR: 85 [68-97] vs 69 [44-80] mL/min). NT-proBNP levels were higher and LDL-cholesterol levels were lower in HF patients. Median intensive care unit length of stay was significantly higher in patients who developed HF. Concerning all-cause in-hospital mortality, there was no difference between the two groups. There were no differences in long-term treatments, but HF patients took fewer CV drugs during acute medical care.

Association between GDF15 levels and study variables

Predictors of GDF15 are shown in Table 2.

	Patients (n=284)	GDF15 relative expression or r	p value
CV risk factors			
Age (years)	67 (57-78)	0.493	<0.001
Female	76 (27)	1,332 (942-2,360)	0.008
BMI (kg/m ²)	26 (24-30)	- 0.110	0.064
Hypertension	168 (59)	1,378 (893-2,316)	<0.001
Diabetes	66 (23)	1,658 (1,070-2,711)	<0.001
Hypercholesterolemia	107 (38)	1,210 (838-2,352)	0.079
Family history of CAD	70 (25)	1,053 (773-1,606)	0.100
Current smoking	84 (30)	1,066 (667-1,662)	0.075
CV history			
CAD	47 (17)	1,540 (1,081-3,091)	0.001
Stroke	16 (6)	1,542 (1,073-2,001)	0.171
Chronic kidney disease	14 (5)	2,512 (1,426-4,568)	<0.001
Clinical data			
LVEF	55 (50-60)	- 0.193	0.001
HR (bpm)	76 (64-87)	0.158	0.009
SBP (mmHg)	141 (123-165)	- 0.187	0.002
DBP (mmHg)	82 (70-94)	- 0.286	<0.001
STEMI	140 (49)	1,134 (796-1,726)	0.869
GRACE risk score	139 (116-167)	0.545	<0.001
ICU stay length (days)	3 (3-4)	0.129	0.030
Biological data			
CRP \geq 3 mg/L	149 (53)	1,334 (928-2,293)	< 0.001
Creatinine clearance (CKD EPI) (mL/min)	83 (67-96)	0.269	< 0.001
Peak troponin Ic (ng/mL)	15 (3-70)	0.124	0.039
NT-proBNP (pg/mL)	363 (86-1,456)	0.390	< 0.001
Glucose (mmol/L)	7 (6-8)	0.288	< 0.001
LDL cholesterol (g/L)	1.2 (0.9-1.5)	- 0.316	< 0.001
HDL cholesterol (g/L)	0.5 (0.4-0.6)	- 0.059	0.326
Triglycerides (g/L)	1.2 (0.8-1.7)	- 0.089	0.139
Chronic medications			
Antiplatelet	23 (8)	1,139 (836-2,082)	0.597
Aspirin	67 (24)	1,510 (1,037-2,528)	0.003
ARB	25 (20)	1,384 (836-2,541)	0.096

ACE inhibitors	55 (19)	1,543 (1,048-2,684)	0.002
Statin	84 (30)	1,402 (986-2,464)	0.001
Beta-blockers	75 (26)	1,435 (1,074-2,858)	<0.001
Acute medications			
Antiplatelet	272 (96)	1,128 (775-1,776)	0.146
Aspirin	278 (98)	1,162 (777-1,930)	0.377
ARB	34 (12)	1,163 (606-2,361)	0.873
ACE inhibitors	172 (61)	1,071 (717-1,588)	0.002
Statin	260 (92)	1,131 (761-1,862)	0.086
Beta-blockers	200 (70)	1,192 (753-1,964)	0.939

Table 2: Association between GDF15 levels and study variables (n=284).

Data are expressed as n (%) or median (25th and 75th percentiles)

n: number; r: correlation coefficient; BMI: body mass index; CAD: coronary artery disease; LVEF: left ventricular ejection fraction; HR: heart rate; SBP: systolic blood pressure; DBP: diastolic blood pressure; STEMI: ST segment elevation myocardial infarction; GRACE: Global Registry of Acute Coronary Events; ICU: Intensive Care Unit; CRP: C-reactive protein; NT-proBNP: N-terminal pro-brain natriuretic peptide; LDL: low density lipoprotein; HDL: high density lipoprotein; ARB: angiotensin II receptor blockers; ACE inhibitors: angiotensin converting enzyme inhibitors

GDF15 levels were significantly associated with age, sex, hypertension and diabetes, prior coronary artery disease and chronic kidney disease. Moreover, GDF15 was positively correlated with heart rate, GRACE risk score, intensive care unit stay length and negatively correlated with LVEF and systolic/diastolic blood pressure. GDF15 showed positive associations with biomarkers such as CRP, creatinine clearance,

troponin Ic peak, NT-proBNP, glucose and negative correlation with LDL-cholesterol.

Associations between GDF15 levels and HF

GDF15 levels were much higher in patients with HF compared to patients without ($1,644 \pm 90$ vs. $4,236 \pm 1,103$ ng/L, $p=0.021$, Figure 2).

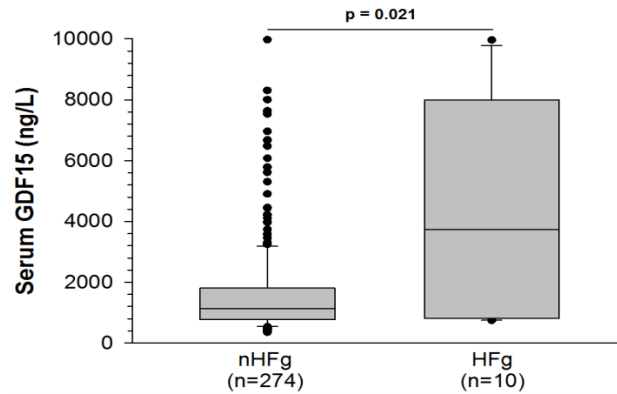


Figure 2: Serum levels of growth differentiation factor 15 (GDF15) in patients who developed heart failure (HFg) and patients who did not develop HF (nHFg) after AMI.

We also analyzed the relationship between the biomarker and HF severity according to HF functional class (Killip 1 (no HF) vs Killip 2/3 (moderate HF or pulmonary edema) vs Killip 4 (cardiogenic shock)). GDF15 levels increased significantly across the 3 groups (1,073 (718-1,620) vs 1497 (988-2,683 vs 7,966 (2,918-9,021))) ng/L. Receiver operating characteristic (ROC) curve analysis identified the cut-off value for GDF15 to estimate HF risk at 4,981 ng/L; we rounded the cut-off to 5,000 ng/L for more clinical relevance. The area under the curve (AUC) was 0.716 ($p=0.021$) (Figure 3), showing weak sensitivity but high specificity (50% and 95%, respectively). Adding GDF15 to the classic clinical biomarkers associated with HF development (i.e. age, LVEF, SBP, and NT-proBNP) improved the AUC when compared with the biomarkers alone (0.817 ± 0.071 vs. 0.808 ± 0.078) (Figure 3).

By univariate analysis, age (OR 1.06, 95% CI 1.01-1.11; $p=0.027$), systolic blood pressure (OR 0.97, 95% CI 0.95-1.000; $p=0.038$), LVEF (OR 0.93, 95% CI 0.89-0.98; $p=0.010$), log NT-proBNP (OR 3.03;

95% CI 1.32-6.92; $p=0.009$) and GDF15 > 5,000 ng/L (OR 20.08; 95% CI 5.16-78.14; $p<0.001$) were associated with the onset of HF. There was a gradual relationship between GDF15 and Killip ($p<0.001$). In multivariate analysis, high GDF15 remained associated with onset of HF, after adjustment for confounding factors (Table 3), even beyond traditional HF biological markers such as NT-proBNP levels or clinical markers such as LVEF.

The quality index suggested that the model was correct ($-2LL=63.308$; $pHL=0.487$; %class=96.5). Given the weak statistical power and related low number of events, we further performed 2 separate multivariate models to test the predictive value of GDF15 (model 1: including age, LVEF and SBP; and model 2: age, and Log NT-proBNP). In these 2 models, GDF15 remained a strong estimator of HF ($p=0.006$ for model 1 and $p=0.002$ for model 2). Moreover, the addition of GDF15 significantly improved the performance of all the models, based on $-2LL$ comparison ($p<0.05$) (Table 4).

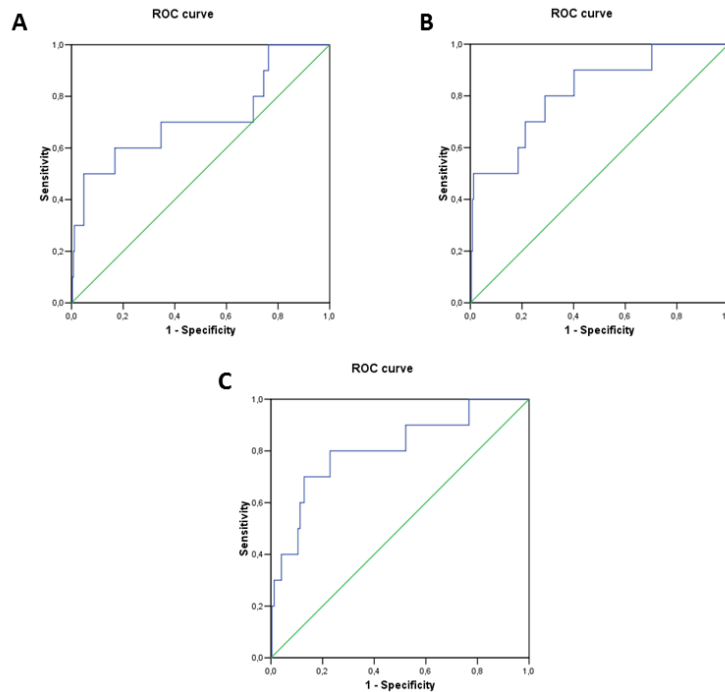


Figure 3: ROC curves for heart failure development including A) GDF15 (AUC=0.716 ± 0.100 (0.520-0.911); p=0.021); B) clinical biomarkers (age, SBP, NT-proBNP; AUC=0.808 ± 0.078 (0.656-0.960); p=0.001) and C) GDF15 in addition to clinical biomarkers. (AUC=0.817 ± 0.071 (0.678-0.956); p=0.001)

	Univariate			Multivariate		
	OR	95% CI	p value	OR	95% CI	p value
Age , per year	1.06	1.01-1.11	0.027	1.03	0.98-1.09	0.249
SBP , per mmHg	0.97	0.95-1.000	0.038	0.98	0.96-1.01	0.247
LVEF , per %	0.93	0.89-0.98	0.010	0.97	0.91-1.03	0.294
Log NT-proBNP , per unit	3.03	1.32-6.92	0.009	1.12	0.42-2.98	0.820
High GDF15 , (>5,000 vs ≤5,000 ng/L)	20.08	5.16-78.14	< 0.001	8.43	1.57-45.32	0.013

Table 3: Logistic regression analysis to estimate severe HF development in AMI

SBP: systolic blood pressure; LVEF: left ventricular ejection fraction; NT-proBNP: N-terminal pro-brain natriuretic peptide; GDF15: growth differentiation factor 15; OR: odds ratio; CI: confidence interval.

	Model 1		Model 2		Model 3	
	OR (CI)	p	OR (CI)	p	OR (CI)	p
Age, per y	1.036 (0.984-1.091)	0.176	1.024 (0.970-1.080)	0.390	1.042 (0.987-1.100)	0.141
SBP, per mmHg	0.984 (0.958-1.010)	0.223	X		0.980 (0.954-1.006)	0.124
LVEF, per %	0.966 (0.907-1.029)	0.288	X		0.951 (0.897-1.009)	0.094
GDF15>5000 ng/L	9.240 (1.884-45.324)	0.006	10.989 (2.341-51.581)	0.002	X	
Log NT-proBNP, per unit	X		1.494 (0.593-3.765)	0.394	1.607 (0.620-4.164)	0.329
	-2LL=63.601; pHL=0.542; %class=96.6		-2LL=68.457; pHL=0.770; %class=96.4		-2LL=69.026 pHL=0.584; %class=95.8	

Table 4: Multivariate logistic regression analysis for prediction of in-hospital HF

GDF: Growth differentiation factor; LVEF: Left ventricular ejection fraction; NT-proBNP: N-terminal pro Brain natriuretic peptide; SBP: systolic blood pressure

Discussion

The present study suggests that GDF15 levels at admission in patients with AMI may help to predict the occurrence of severe HF during hospitalization, in addition to traditional markers.

The stress-responsive GDF15 cytokine has been associated with unfavorable clinical outcomes in both AMI and HF. In STEMI patients, strong correlations have been documented between GDF15 levels and major adverse cardiac events [11]. Moreover, admission GDF15 concentrations are closely related to all-cause mortality in NSTEMI patients [10], which provides prognostic information beyond what is suggested by established clinical and biochemical

markers. In 18,876 patients with AMI from the PLATO study, mortality rates were shown to be significantly increased in patients with high circulating GDF15 [26]. Increased concentrations of GDF15 also identified patients at increased risk for adverse left ventricular remodeling [11,27] and recurrent events such as re-hospitalization for congestive HF within two years [28].

In the present study, the median concentration of GDF15 in patients hospitalized for AMI (1,144 ng/mL) was slightly lower than in patients with AMI [26] (1,550 ng/mL), but still in the range of concentrations observed in this population. We observed that in AMI patients, GDF15 circulating

levels were positively associated with classic cardiovascular risk factors such as age, hypertension, diabetes, chronic kidney disease, coronary artery disease, CRP, NT-proBNP, and C-TnI peak. In patients with stable or acute coronary artery disease, multivariate regression analysis showed that advanced age, diabetes, acute hyperglycemia, and chronic kidney disease were independent predictors of elevated GDF15 levels [29]. Even in patients free of clinically overt cardiovascular diseases, GDF15 was positively associated with age, smoking, antihypertensive treatment, diabetes, and worse kidney function [30]. In elderly community-dwelling individuals, changes in GDF15 levels were also related to male sex, hypertension, diabetes, HF, impaired renal function, and concentrations of NT-proBNP [31].

In patients admitted for AMI, HF is a frequent complication that may be present at admission or develop during the hospitalization. It is associated with a substantial increased risk of death by at least 3- to 4-fold [1]. Patients with clinical signs of HF on admission to the hospital are usually older with more frequent recurrent ischemia and diabetes. The development of HF during a hospital stay is usually related to infarct size, mechanical complications, or myocardial stunning. Identifying patients who will develop HF as a complication of AMI is of major importance since they will require tailored treatments. Biomarkers of HF, such as NT-proBNP, are strong independent predictors of risk. However, in the context of AMI, GDF15 can be used to identify patients at high risk at short or long term follow-up [13]. Moreover, in HF patients with preserved or reduced ejection fraction, studies suggest that, in addition to hemodynamic stress evaluated through

NT-proBNP elevation, the inflammatory context related to GDF15 may play an important role [20]. Furthermore, it has been shown that GDF15 can be used as a prognostic biomarker in patients with HF with preserved ejection fraction [32]. In the present work, we identified admission circulating levels of GDF15 as useful predictors of the occurrence of severe in-hospital HF, in addition to **NT-proBNP levels**.

So far, little is known about the tissues that produce GDF15 in patients with cardiovascular disease, although GDF15 was shown to be upregulated in the heart after an AMI [33]. However, in patients with non-ischemic dilated cardiomyopathy, the heart does not seem to be an important source of GDF15 production, suggesting that GDF15 might also originate from peripheral tissues [34]. In patients who will develop HF during their hospitalization, higher GDF15 levels may be related to increased infarct size, a hypothesis that is consistent with our observation of a positive correlation between cTnI peak and GDF15 levels. The association with other determinants of in-hospital HF such as myocardial mechanical dysfunction or stunning is not excluded. However, as a biomarker, GDF15 may provide insight that complements the information obtained with traditional clinical or biochemical cardiovascular markers. In the long-term, increased GDF15 concentrations were shown to identify patients at risk of re-hospitalization for new or worsening HF [28], independently of other biomarkers such as hs-CRP and NT-proBNP. GDF15 may reflect non-overlapping disease pathways that contribute to the development of HF after AMI. Notably, changes in GDF15, in contrast to hs-CRP

variations, are strong predictors of major cardiovascular events [35].

Study limitations

The small number of patients who developed HF (n=10) and the resulting lack of statistical power limited our ability to draw firm conclusions from our results. Additionally, it was a single-center study and the sensitivity of the test to predict in-hospital HF was low. However, both clinicians and technicians were blinded to the results. Moreover, the association between the biomarker and the event (HF) was significant ($p=0.021$), and the result was further supported by both univariate regression analysis ($p<0.001$) and AUC ($p=0.021$), which persisted even after adjustment for major determinants of HF ($p=0.013$). Larger studies are needed to confirm these preliminary findings.

Conclusions

To conclude, our preliminary study shows that GDF15 could be an integrative biomarker of severe in-hospital HF in patient with AMI. Experimental studies are needed to elucidate the underlying mechanisms linking this cytokine with the development of HF.

Abbreviations

AMI: acute myocardial infarction

c-Tn: cardiac-Troponin

CV: cardiovascular

CKD-EPI: Chronic Kidney Disease-Epidemiology Collaboration formula

GDF15: growth differentiation factor-15

HF: heart failure

LVEF: left ventricular ejection fraction

NT-proBNP: N-Terminal pro-Brain Natriuretic Peptide

RICO: ObseRvatoire des Infarctus de Côte-d'Or

SBP: systemic blood pressure

Declarations

Ethics approval and consent to participate

This study protocol conforms to the ethical guidelines of the Declaration of Helsinki and was approved by the Ethics Committee of the Dijon University Hospital. Written informed consent was obtained for all participants before inclusion.

Consent to publish

Not applicable.

Availability of data and material

The datasets used and/or analyzed during the current study are available from the corresponding author on reasonable request.

Competing interest

The authors declare to have no competing interests

Funding

This work was supported by the Dijon Bourgogne University Hospital (clinicians and technician salaries), the Fédération Française de Cardiologie the Association de Cardiologie de Bourgogne (buying of consumables and kits), and by grants from the Agence Régionale de Santé (ARS) de Bourgogne-Franche-Comté (clinical assistant salaries) and from the Conseil Régional de Bourgogne Franche-Comté (buying of consumables and kits) and from de Agence Nationale de la Recherche (ANR, buying of kits).

Authors' Contribution

CV, M.Z. and L.R.: designed and supervised the project, A.M. and CV wrote the main manuscript, F.B. collected patient's data, YC: gave scientific guidance; AM: performed biological analysis, A.M., M.Z. and M.M.: performed statistical analysis and prepared figures and tables. All authors reviewed the manuscript.

Acknowledgments

The authors thank Suzanne Rankin for English revision of the manuscript, and Ivan Porcherot and Morgane Lainé for providing technical assistance.

References

1. Bahit MC, Kochar A, Granger CB. Post-myocardial infarction heart failure. *JACC: Heart Failure* 6 (2018): 179-186.
2. Hellermann JP, Jacobsen SJ, Gersh BJ, et al. Heart failure after myocardial infarction: a review. *The American Journal of Medicine* 113 (2002): 324-330.
3. Steinhart B, Thorpe KE, Bayoumi AM, et al. Improving the diagnosis of acute heart failure using a validated prediction model. *Journal of the American College of Cardiology* 54 (2009): 1515-1521.
4. McKie PM, Burnett Jr JC. NT-proBNP: The Gold Standard Biomarker in Heart Failure. *Journal of the American College of Cardiology* 68 (2016): 2437-2439.
5. Emmerson PJ, Wang F, Du Y, et al. The metabolic effects of GDF15 are mediated by the orphan receptor GFRAL. *Nature Medicine* 23 (2017): 1215.
6. Kahli A, Guenancia C, Zeller M, et al. Growth differentiation factor-15 (GDF-15) levels are associated with cardiac and renal injury in patients undergoing coronary artery bypass grafting with cardiopulmonary bypass. *PloS One* 9 (2014): e105759.
7. Guenancia C, Kahli A, Laurent G, et al. Pre-operative growth differentiation factor 15 as a novel biomarker of acute kidney injury after cardiac bypass surgery. *International Journal of Cardiology* 197 (2015): 66-71.
8. Wollert KC, Kempf T, Wallentin L. Growth differentiation factor 15 as a biomarker in cardiovascular disease. *Clinical Chemistry* 63 (2017): 140-151.
9. Wollert KC, Kempf T, Lagerqvist B, et al. Growth differentiation factor 15 for risk stratification and selection of an invasive treatment strategy in non ST-elevation acute coronary syndrome. *Circulation* 116 (2007): 1540-1548.
10. Wollert KC, Kempf T, Lagerqvist B, et al. Growth differentiation factor 15 for risk stratification and selection of an invasive treatment strategy in non ST-elevation acute coronary syndrome. *Circulation* 116 (2007): 1540-1548.
11. Eitel I, Blase P, Adams V, et al. Growth-differentiation factor 15 as predictor of mortality in acute

- reperfused ST-elevation myocardial infarction: insights from cardiovascular magnetic resonance. *Heart* 97 (2011): 632-640.
12. Widera C, Pencina MJ, Meisner A, et al. Adjustment of the GRACE score by growth differentiation factor 15 enables a more accurate appreciation of risk in non-ST-elevation acute coronary syndrome. *European Heart Journal* 33 (2012): 1095-1104.
 13. Damman P, Kempf T, Windhausen F, et al. Growth-differentiation factor 15 for long-term prognostication in patients with non-ST-elevation acute coronary syndrome: an Invasive versus Conservative Treatment in Unstable coronary Syndromes (ICTUS) substudy. *International Journal of Cardiology* 172 (2014): 356-363.
 14. Khan SQ, Ng K, Dhillon O, et al. Growth differentiation factor-15 as a prognostic marker in patients with acute myocardial infarction. *European Heart Journal* 30 (2009): 1057-1065.
 15. Kempf T, Björklund E, Olofsson S, et al. Growth-differentiation factor-15 improves risk stratification in ST-segment elevation myocardial infarction. *European Heart Journal* 28 (2007): 2858-2865.
 16. Schaub N, Reichlin T, Twerenbold R, et al. Growth differentiation factor-15 in the early diagnosis and risk stratification of patients with acute chest pain. *Clinical Chemistry* 58 (2012): 441-449.
 17. Kempf T, von Haehling S, Peter T, et al. Prognostic utility of growth differentiation factor-15 in patients with chronic heart failure. *Journal of the American College of Cardiology* 50 (2007): 1054-1060.
 18. Bettencourt P, Ferreira-Coimbra J, Rodrigues P, et al. Towards a multi-marker prognostic strategy in acute heart failure: a role for GDF-15. *ESC Heart Failure* 5 (2018): 1017-1022.
 19. Santhanakrishnan R, Chong JP, Ng TP, et al. Growth differentiation factor 15, ST2, high-sensitivity troponin T, and N-terminal pro brain natriuretic peptide in heart failure with preserved vs. reduced ejection fraction. *European Journal of Heart Failure* 14 (2012): 1338-1347.
 20. Chan MM, Santhanakrishnan R, Chong JP, et al. Growth differentiation factor 15 in heart failure with preserved vs. reduced ejection fraction. *European Journal of Heart Failure* 18 (2016): 81-88.
 21. George M, Jena A, Srivatsan V, et al. GDF 15-a novel biomarker in the offspring for heart failure. *Current Cardiology Reviews* 12 (2016): 37-46.
 22. Zeller M, Steg PG, Ravisy J, et al. Relation between body mass index, waist circumference, and death after acute myocardial infarction. *Circulation* 118 (2008): 482-490.
 23. Thygesen K, Alpert JS, Jaffe AS, et al. Third universal definition of myocardial

- infarction. *Circulation* 126 (2012): 2020-2035.
24. Meloux A, Rochette L, Maza M, et al. Growth Differentiation Factor-8 (GDF8)/Myostatin Is a Predictor of Troponin I Peak and a Marker of Clinical Severity after Acute Myocardial Infarction. *Journal of Clinical Medicine* 9 (2020): 116.
25. Granger CB, Goldberg RJ, Dabbous O, et al. Predictors of hospital mortality in the global registry of acute coronary events. *Archives of Internal Medicine* 163 (2003): 2345-2353.
26. Hagström E, James SK, Bertilsson M, et al. Growth differentiation factor-15 level predicts major bleeding and cardiovascular events in patients with acute coronary syndromes: results from the PLATO study. *European Heart Journal* 37 (2016): 1325-1333.
27. Dominguez-Rodriguez A, Abreu-Gonzalez P, Avanzas P. Relation of growth-differentiation factor 15 to left ventricular remodeling in ST-segment elevation myocardial infarction. *The American Journal of Cardiology* 108 (2011): 955-958.
28. Bonaca MP, Morrow DA, Braunwald E, et al. Growth differentiation factor-15 and risk of recurrent events in patients stabilized after acute coronary syndrome: observations from PROVE IT-TIMI 22. *Arteriosclerosis, Thrombosis, and Vascular Biology* 31 (2011): 203-210.
29. Farhan S, Freynhofer MK, Brozovic I, et al. Determinants of growth differentiation factor 15 in patients with stable and acute coronary artery disease. A prospective observational study. *Cardiovascular Diabetology* 15 (2016): 60.
30. Ho JE, Mahajan A, Chen MH, et al. Clinical and genetic correlates of growth differentiation factor 15 in the community. *Clinical Chemistry* 58 (2012): 1582-1591.
31. Eggers KM, Kempf T, Wallentin L, et al. Change in growth differentiation factor 15 concentrations over time independently predicts mortality in community-dwelling elderly individuals. *Clinical Chemistry* 59 (2013): 1091-1098.
32. Izumiya Y, Hanatani S, Kimura Y, et al. Growth differentiation factor-15 is a useful prognostic marker in patients with heart failure with preserved ejection fraction. *Canadian Journal of Cardiology* 30 (2014): 338-344.
33. Kempf T, Eden M, Strelau J, et al. The transforming growth factor- β superfamily member growth-differentiation factor-15 protects the heart from ischemia/reperfusion injury. *Circulation Research* 98 (2006): 351-360.
34. Lok SI, Winkens B, Goldschmeding R, et al. Circulating growth differentiation factor-15 correlates with myocardial fibrosis in patients with non-ischaemic dilated cardiomyopathy and decreases

- rapidly after left ventricular assist device support. *European Journal of Heart Failure* 14 (2012): 1249-1256.
35. Dominguez-Rodriguez A, Abreu-Gonzalez P, Hernandez-Balderon IF, et al. Change in growth differentiation factor 15, but not C-reactive protein, independently predicts major cardiac events in patients with non-ST elevation acute coronary syndrome. *Mediators of Inflammation* 2014 (2014).



This article is an open access article distributed under the terms and conditions of the [Creative Commons Attribution \(CC-BY\) license 4.0](https://creativecommons.org/licenses/by/4.0/)